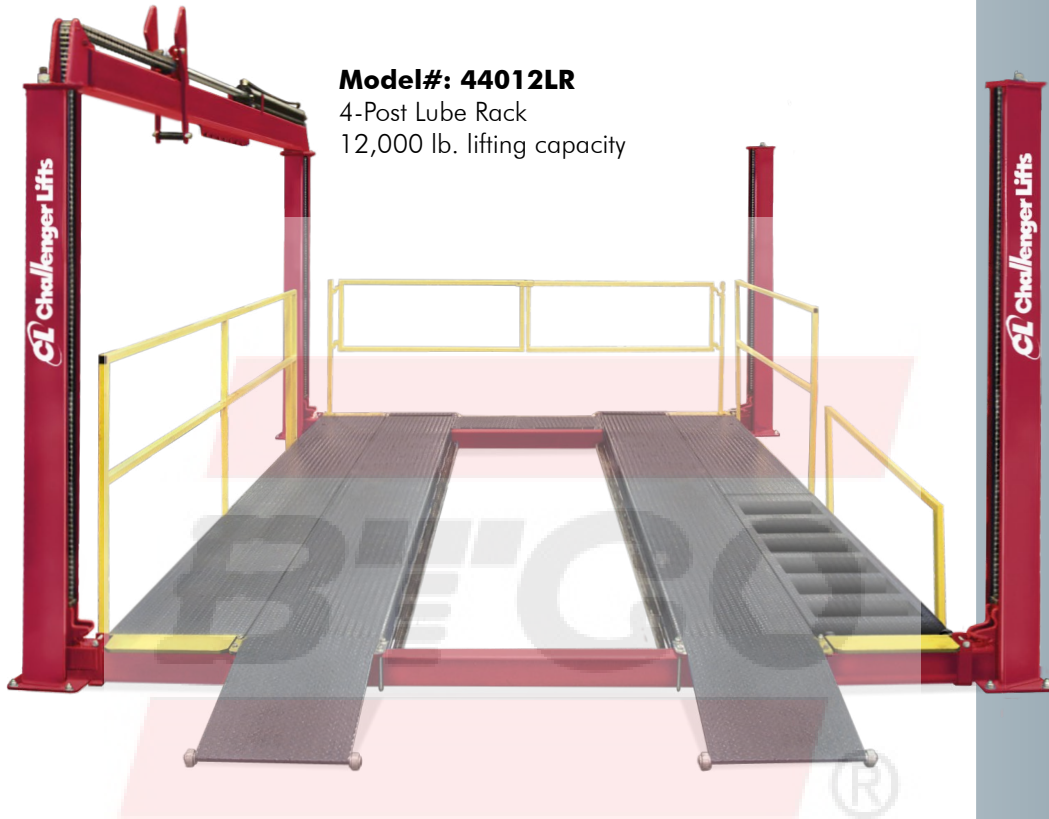
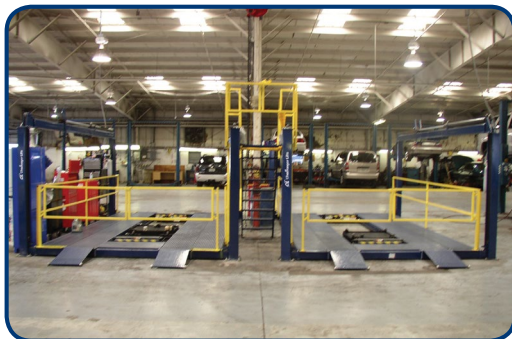


CL Challenger Lifts



Model#: 44012LR
4-Post Lube Rack
12,000 lb. lifting capacity

44012LR 4-Post Lube Racks



44012DLR
12,000 lb. capacity Dual Lube Rack

Challenger Lifts' 44012LR is the best choice for a two person oil change operation. This Lube Rack is optimized for speed and efficiency. Its design allows one person to check fluids under the hood while standing on the diamond plated catwalk and another underneath, to change filters and fluids.

Challenger Lube Racks are also available in a dual configuration. The 44012DLR features a staircase and catwalk, connecting two lube racks, allowing technicians to move from one bay to another for the most expedient express lube shops.

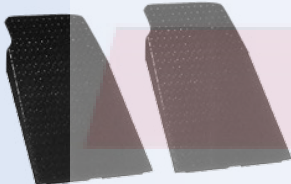
With optional drive thru ramps and oil drain pan, the 44012W, 44012LR and 44012DLR is a perfect supplement to any service facility.

Features & Benefits:

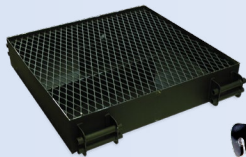
- Walkways and handrails provide safety and allow 2 people to work on oil changes for maximum expediency
- Diamond plated approach ramps for positive vehicle traction
- Low profile runways promote easy drive on for vehicles that sit low to the ground
- Front gate and moving ladder with wheels provide convenience and drive-thru flexibility
- Offset flared column design provides rigidity and stability during lifting
- High tensile strength leaf chain for heavy lifting and maximum reliability
- Heavy duty lifting cylinder provides reliability to minimize downtime
- Continuously engaged mechanical lock system for increased safety
- Built-in runway rail system accepts optional rolling jacks for brake/tire work and other general service

Optional Accessories:

Part #44RK12
28" length pivoting drive thru ramps



Part #10310
Air and electric workstation with filter/lubricator/regulator



Part #10267
32 gallon rolling oil drain pan

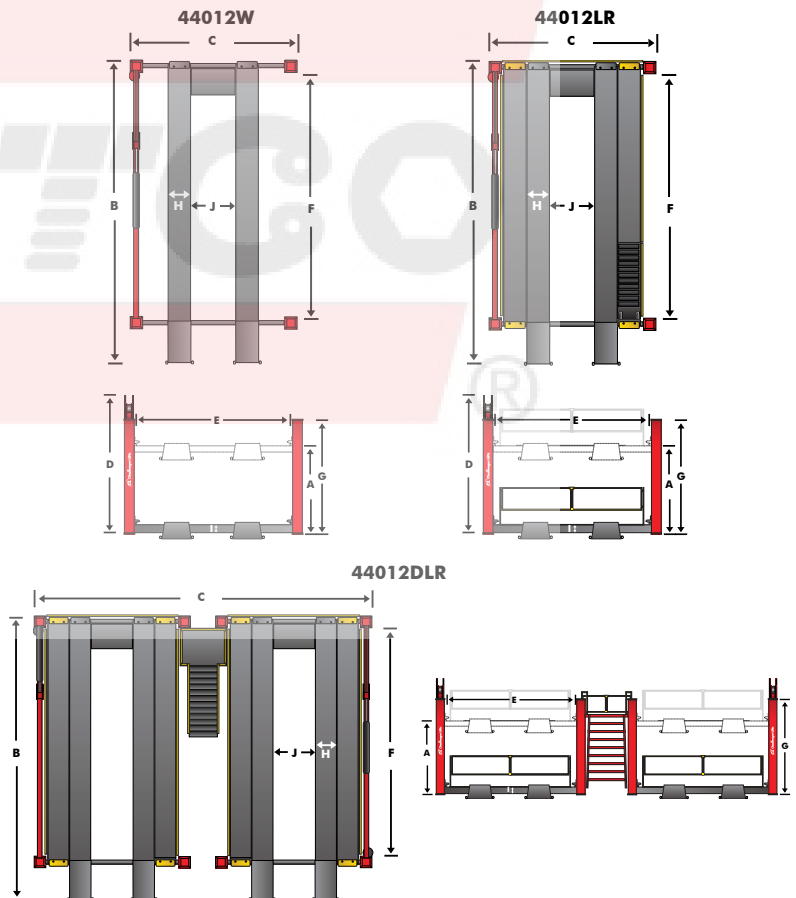


Part #10342
Hanging tool holder

For more information, contact your Authorized Challenger Lifts Distributor.

Model Number	44012W	44012LR	44012DLR
Lifting Capacity	12,000 lb. (5443kg)		
Max. Wheelbase	216" (5486mm)		
A Rise Height	77 ³ / ₄ " (1975mm)		
B Length Overall	22' 6 ¹ / ₄ " (6864mm)	22' 3 ¹ / ₄ " (6725mm)	
C Width Overall	12' 4 ¹ / ₄ " (3766mm)	26' 9" (8153mm)	
D Height Overall	100 ¹ / ₂ " (2553mm)	144 ¹ / ₂ " (3670mm)	
E Inside Columns	133" (3378mm)		
F Between Columns	221" (5613mm)		
G Height of Columns	84 ³ / ₄ " (2153mm)		
H Width of Runways	20 ¹ / ₂ " (521mm)		
I Height of Runways	6 ³ / ₄ " (171mm)		
J Width Between Runways	42 ¹ / ₂ " (1080mm)		
Motor	2HP		
Voltage (1 Phase Std.) ¹	208-230v		
Speed or Rise	80 Sec.		
Min. Recomm. Bay Size	15' 6" x 25' (4724mm x 7620mm)	15' 6" x 25' (4724mm x 7620mm)	30' x 24' 6" (9144mm x 7468mm)

¹ Optional 3 phase electrical also available. Available in Red and Blue only.



Challenger Lifts, Inc. reserves the right to make changes to specifications without notice and without making changes retroactive. Unloading, installation and oil not included.