

LARIUS®

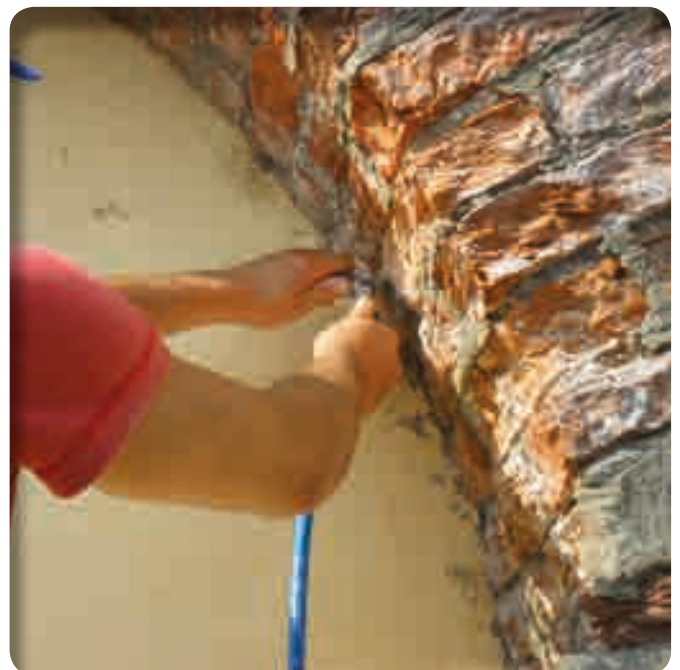
Transfer - Extrusion - Injection pumps - Paint spraying equipment

Made in Italy since 1969



Catalogue 2016

Paint decoration & Construction
Airless road marking machines



Larius: one solution
for all your projects



WHERE EVER YOU SPRAY YOU'LL FIND US

Italian manufacturer since 1969

Technological solutions for any type of project

Larius is a specialised company that manufactures products (entirely in Italy since 1969) ranging from small spraying units to products for the most advanced specialised systems on the market for professional painting.

Our pumps are rigorously tested to guarantee operation for a long cycle of use and maximum performance in the preselected work mode.

The quality of Larius machine finishing and systems determines a perfect aesthetic look, without clots and running. Thanks in part to collaboration with major manufacturers of materials that are tested in the company in order to ensure a perfect synergy between the product and the pump that distributes it.

In order to meet the operational needs of the user, Larius cooperates with university engineering centres to test increasingly innovative and resistant components that make our pumps operation-ready in small spaces and large alike in extreme working conditions.

- Commissioned and ready to use equipment
- Original accessories and spare parts
- Qualified technical assistance
- Personalised technical courses, theoretical and practical, to learn how the equipment operates and its technical specifications

Larius works on an international level with a vast network of distributors, service centres and specialised consultants at your complete disposal.

LARIUS
Your job is our job every day.



LARIUS SERVICE

More services for professionals

LARIUS supports you in your work with professional and reliable equipment and complete systems, able to apply effectively and efficiently every type of product based on the specific application.

- **TECHNICAL ADVICE**
- **TECHNICAL ASSISTANCE**
- **TEST PRODUCTS**
- **CUSTOMIZED TECHNICAL STAGES**

Your contact:

Tel. +(+974) 443 54 298
sales@boltsandtools.com

- **CUSTOMIZED SOLUTIONS**

Request a customized offer based on the needs of your customer.

Your contact:

Tel. +(+974) 443 54 298
sales@boltsandtools.com

- **OPEN HOUSE**

Technical open day doors with real-time demonstration of the equipment.

- **NEWS LETTER REGISTRATION**

Receive updates and reports of our technical tests – demos.

- **REQUIRE ADVERTISING MATERIAL FOR YOUR WEB PRODUCTION**

To be used for positive commercial purposes and the promotion of the Larius brand.

- **PUBLICATION OF VIDEOS AND PHOTOS OF YOUR JOBS IN OUR GALLERY SITE**

The material must be sent with the licence of use.

Tel. +(+974) 443 54 298
sales@boltsandtools.com

LARIUS COMPLETE SOLUTIONS SINCE 1969
"Maximum productivity for the entire cycle of use."

APPLICATIONS	SOLUTIONS
<ul style="list-style-type: none"> • Painting • Asbestos removal from roofs • Prefabricated houses and bungalows painting • Bridges, roofs and fire barriers painting • Buildings maintenance • Renovation roofs 	Airless electric piston or diaphragm pumps
<ul style="list-style-type: none"> • Walls buildings shot blasting 	Shot blasters free flow
<ul style="list-style-type: none"> • Coatings and insulation • Thermal and sound insulation • Floors painting • Buildings maintenance 	Airless electric piston or diaphragm pumps Equipment for dense and aggregate products
<ul style="list-style-type: none"> • Walls waterproofing injections • Terraces and balconies, front and accessory elements, cellars, basements, swimming pools, fountains, pools, purifiers. waterproofing • Dehumidification, sidewalks and foundations waterproofing 	Injection pumps
<ul style="list-style-type: none"> • Degrease and remove any dirty surface. Heavy Duty use with cold or hot water, to remove stubborn dirty surface like oil, grease and heat-resistant substances. 	Industrial pneumatic hydro cleaners
<ul style="list-style-type: none"> • Roads, highways, tunnels, tunnels, airports. marking and maintenance • Logistics internal-external marking • Sports flooring marking • Sports fields marking • Circuits sports marking • Signs for the defense and civil protection marking • Parking internal-external marking 	Road marking airless machines



■ Airless electric piston pumps
Pg. 6



■ Airless electric diaphragm pumps
Pg. 20



■ Equipment for dense and aggregate products
Pg. 30



■ Pneumatic pumps for resins
Pg. 40



■ Industrial pneumatic hydro cleaners
Pg. 47



■ Electronic dosing systems 2K OUT-DOOR
Pg. 48



■ Q4 Gold Professional HVLP turbine system
Pg. 54



■ Sandblasting equipment
Pg. 55



■ Airless road marking machines with petrol or battery
Pg. 57



■ Accessories and spare parts kit from:
Pg. 82

“Reliable and long-lasting performance”

WORKING PRINCIPLE

The Electric Airless Piston Pump is a device used to paint in High Pressure without the help of air. The pump is run by an electric engine coupled to a gear reducer. An eccentric shaft and a piston rod allow the “alternative motion” necessary to the operation of the “pumping unit” (suction valve, piston pump, material seal gaskets) that supplies the material when the piston is both in the ascending and the descending phase: the pump suctions the material and pushes it towards the outlet.

WORKING ADVANTAGES

- Exclusive electric LARIUS HEAD CONTROL system: The steering system protects the engine and the card in case of a lack in grounding, power surges, overheating, and inappropriate extension cables.
- Engine with power capacity that is suited to the machine’s technical and functional characteristics.
- Ability to work in a “totally efficient” manner with respect to the suctioning and application of dense and viscous products
- Drying times are significantly reduced due to the lower input of diluent liquids to the product
- Fewer applications to “cover” the surface to be painted
- High quality components and raw materials with high resistance to wear and tear
- Pressure and spray angle are “constant” during device operation
- Easy operation - cleaning - maintenance

WORKING ADVANTAGES

POWER GENERATOR UNIT

To ensure correct operation of the airless electric piston equipment the “minimum power required” must be respected. Use of power that is less than that indicated may compromise the integrity and the operation of the equipment. It is recommended to use electric cables with a section of at least 2.5mm² and to ensure the presence of the grounding system on the power generator.

MACHINE:

- JOLLY
- JOLLY TOP FINISH MIST-LESS
- NEW EXCALIBUR
- ZEUS
- DRAGON
- THOR

POWER GENERATOR UNIT:

- 4,0 KW minimum Single-phase
- 5,0 KW minimum Single-phase
- 4,0 KW minimum Single-phase
- 5,0 KW minimum Single-phase
- 5,0 KW minimum Single-phase
- 6,0 KW minimum Single-phase

PAINT

Use special paint for airless applications

NOZZLE

Select the nozzle according to the application needs to achieve the highest quality of finishing and the quickest application time. The nozzle size and spraying fan are printed on the nozzle’s body : the first number is the spraying bore size and the second number is the spray angle of the fan.

“Reliable and long-lasting performance”



	Jolly	Jolly Top Finish	New Excalibur	Zeus	Dragon	Thor
Max. flow rate	1,9 l/m	1,9 l/m	2,1 l/m	4 l/m	5 l/m	7 , 5 l/m
Engine Power	650 watt	650 watt	0 ,75 Kw	1 , 8 Kw (Mod. Benzina: 4,5 kw)	2 , 4 Kw	2 , 8 Kw
Maximum Pressure	220 bar	220 bar	220 bar	220 bar	230 bar	230 bar
Voltage	230 VAC - 50 Hz	230 VAC - 50 Hz	230 VAC - 50 Hz	230 VAC - 50 Hz	230 VAC - 50 Hz	230 VAC - 50 Hz
Available Voltages	115 VAC - 60 Hz	115 VAC - 60 Hz	115 VAC - 60 Hz	115 VAC - 60 Hz	115 VAC - 60 Hz	115 VAC - 60 Hz
Dimensions	Frame: 450x460x550 mm Trolley: 580x540x995 mm	Trolley: 580x540x995 mm	Frame: 450x460x550 mm Trolley: 580x540x995 mm	Trolley: 600x700x1000 mm	Trolley: 600x700x1000 mm	Trolley: 700x720x1000 mm
Weight	Frame: 15 Kg Trolley: 16 Kg	Trolley: 28 Kg	Frame: 17 Kg Trolley: 18 Kg	Trolley: 60 Kg	Trolley: 66 Kg (Mod. petrol : 70 Kg)	Trolley: 76 Kg
Spray guns	1 AT 250 Spray gun	1 Mist-less gun L400	1 AT 250 Spray gun	1 AT 250 Spray gun 2 AT 250 Spray guns	1 L91 X Spray gun 2 L91 X Spray guns	1 L91 X Spray gun 2 L91 X Spray guns
Nozzle Size	Up to 0,021”	Up to 0,021”	Up to 0,023”	1 spray gun up to 0,029” 2 spray guns up to 0,017”	1 spray gun up to 0,033” 2 spray guns up to 0,019”	1 spray gun up to 0,051” 2 spray guns up to 0,027”

ATTENTION
Max nozzle sizes are only indicative: there can be variations according to paint viscosity and thickness

Fields of Application	Interiors – Exteriors – Industrial buildings – Industrial constructions - Restorations - Roofs		
Main Materials	Lacquers Water paints Acrylics Undercoat paints Enamels Fixatives Paints Emulsions Impregnants Antirust Primer	Water paints Undercoat paints Enamels Fixatives Paints Emulsions Stucco Fillers Bitumens Intumescent Epoxy resins	Smoothers Levelling plaster Pre-mixed plaster (granulometry 0.0) Stucco Plasters Fillers Intumescent Encapsulants Isolants Waterproofing agents Elastomers Epoxy resins Bitumens

Jolly complete with accessories. Complete with SFC 17-40 nozzle.

CODE	DESCRIPTION
K56500	*Jolly on frame 230 V
K56501	*Jolly on trolley 230 V

***Complete with:**

- Line filter, sieve filter 60 mesh, toolbox
- 18026 Antipulsation hose Ø ¼" with M16X1,5 fitting, m 15
- 11200 AT250 airless gun with M16X1,5 revolving fitting and super fast clean base Ref. 18270
- SFC Super Fast Clean nozzle 17- 40

Jolly without accessories.

CODICE	DESCRIZIONE
56500	Jolly on frame 230 V
56501	Jolly on trolley 230 V

Accessories

CODE	DESCRIPTION
18026	Antipulsation hose Ø ¼" with M16X1,5 fitting, m 15
11200	AT250 airless gun with M16X1,5 revolving fitting and super fast clean base Ref. 18270 Optional: Ref. 11250 AT250 airless gun with M16X1,5 revolving fitting ¼" and super fast clean base Ref. 18270
18270	Super Fast Clean base
SFC	Super Fast Clean nozzle. Size : 17-40 / 19-20 / 19-40 / 21-20 / 21-40

* Complete with line filter, sieve filter 60 mesh

Accessories

CODE	DESCRIPTION
18855	Upper and lower gaskets
40106	Pump maintenance kit
147	M16X1,5 revolving fitting complete with pressure gauge

Jolly

Powerful - Versatile - Compact - Safe - Easy and limited maintenance

Ref. K56500

On frame
Complete with accessories



Jolly grants a regular spray pattern without fluctuations.

Ref. K56501

On trolley
Complete with accessories



Suitable Application Materials

- | | |
|------------------|-------------|
| Lacquers | Paints |
| Water paints | Emulsions |
| Acrylics | Impregnants |
| Undercoat paints | Antirust |
| Enamels | Primer |
| Fixatives | |

Technical Data

Max delivery	1,9 l/m
Motor power	0,65 Kw
Max. pressure	220 bar
Voltage	115 / 230 VAC
Weight on frame	15 kg
Weight on trolley	16kg
Max. nozzle size	0,021"
Min. power of power generator	4,0 Kw Single-phase

Accessories



Ref. 11250
AT250 airless spray gun
¼" fitting
Rif. 11200
AT250 airless spray gun
M16X1,5 fitting



Ref. 18026
Antipulsation hose Ø ¼" with M16X1,5 fitting, m 15



Super Fast Clean base
Super Fast Clean nozzle
Stainless Steel Gasket

Ref. 11039 30 MESH

Ref. 11038 60 MESH

Ref. 11037 100 MESH

Ref. 11019 200 MESH

**New Excalibur complete with accessories.
Nozzle included on choice.**

CODE	DESCRIPTION
K18775	*New Excalibur on frame 230 V
K18779	*New excalibur on frame 115 V
K18777	*New excalibur on frame with gravity tank 230 V
K18776	*New excalibur on trolley 230 V
K18778	*New excalibur on trolley with gravity tank 230 V

***Complete with:**

- Line filter, sieve filter 60 mesh, pressure gauge
- 18026** Antipulsation hose Ø 1/4" with M16X1,5 fitting, 15 m
- 11200** AT250 airless gun with M16X1,5 revolving fitting and super fast clean base Ref. 18270

New Excalibur without Accessories

CODE	DESCRIPTION
18775	*New Excalibur on frame 230 V
18779	*New excalibur on frame 115 V
18776	*New excalibur on trolley 230 V
18780	*New excalibur on trolley 115 V
18777	*New excalibur on frame with gravity tank 230 V
18778	*New excalibur on trolley with gravity tank 230 V

*Complete with line filter, sieve filter 60-mesh, pressure gauge.

Accessories

CODE	DESCRIPTION
18026	Antipulsation hose Ø 1/4" with M16X1,5 fitting, 15 m Optional: Ref.18024 Antipulsation hose Ø 1/4" with 1/4" fitting, 15 m
11200	AT250 airless gun with M16X1,5 revolving fitting and super fast clean base Ref. 18270 Optional: Ref. 11250 AT 250 spray gun with 1/4" revolving fitting and super fast clean base Ref. 18270
18270	Super Fast Clean base
SFC	Super Fast Clean nozzle

Kit

CODE	DESCRIPTION
40107	Complete lower section repair kit for excalibur including piston rod and sleeve
18855	Upper and lower gaskets
40106	Lower section repair kit for excalibur

New Excalibur

Airless
Powerful - Versatile - Compact - Safe - Easy and limited maintenance



Ref. K18775

On frame
Complete with accessories

New Excalibur grants a regular spray pattern without fluctuations.

Ref. K18776

On trolley
Complete with accessories



Suitable Application Materials

- | | |
|------------------|-------------|
| Lacquers | Paints |
| Water paints | Emulsions |
| Acrylics | Impregnants |
| Undercoat paints | Antirust |
| Enamels | Primer |
| Fixatives | |

Technical Data	
Max. delivery	2 , 1 l/m
Motor power	0 , 75 Kw
Max. pressure	220 bar
Voltage	230 VAC - 50 Hz 115 VAC - 60 Hz
Weight on frame	17 Kg
Weight on trolley	18 Kg
Max. nozzle size	0 , 023"
Min. power of power generator	4 , 0 Kw Single-phase

Accessories



Ref. 11250
AT250 airless spray gun
1/4" fitting

Rif. 11200
AT250 airless spray gun
M16X1,5 fitting



Ref. 18024
Antipulsation hose Ø 1/4" with 1/4" fitting, 15 m
Ref. 18026
Antipulsation hose Ø 1/4" with M16X1,5 fitting, 15 m



**Super Fast Clean base
Super Fast Clean nozzle
Stainless Steel Gasket**

- Ref. 11039 30 MESH
- Ref. 11038 60 MESH
- Ref. 11037 100 MESH
- Ref. 11019 200 MESH

Zeus complete with accessories. Nozzle included on choice.

CODE	DESCRIPTION
K35100	*Zeus on trolley with rigid suction system 230 V
K35150	*Zeus on trolley with rigid suction system 115 V
K35102	*Zeus on trolley with flexible suction system 230 V
K35155	*Zeus on trolley with flexible suction system 115 V
K31500	*Zeus petrol engine on trolley 230 V

***Complete with:**

Line filter, sieve filter 30 mesh, gauge

18026 Antipulsation hose Ø ¼" with M16X1,5 revolving fitting, 15m

11200 AT250 airless spray gun with M16X1,5 revolving fitting and super fast clean base Ref. 18270

Zeus without Accessories.

CODE	DESCRIPTION
35100	*Zeus on trolley with rigid suction system 230 V
35150	*Zeus on trolley with rigid suction system 115 V
35102	*Zeus on trolley with flexible suction system 230 V
35155	*Zeus on trolley with flexible suction system 115 V
31500	*Zeus petrol engine on trolley 230 V

***Complete with:**

Line filter, sieve filter 30 mesh, gauge

Accessories

CODE	DESCRIPTION
18026	Antipulsation hose Ø ¼" with M16X1,5 revolving fitting, 15m Optional: Ref.18024 Antipulsation hose Ø ¼" with Ø ¼" revolving fitting, 15m
11200	AT250 airless spray gun with M16X1,5 revolving fitting and super fast clean base included Ref. 18270 Optional: Ref.11250 AT250 airless spray gun with ¼" revolving fitting and super fast clean base Ref. 18270
18270	Super Fast Clean base
SFC	Super Fast Clean nozzle

Accessories& Kit

CODE	DESCRIPTION
35110	Complete lower section for Zeus with rigid suction system
35111	Complete lower section for Zeus with flexible suction system
35185	Complete lower section repair kit for Zeus
35112	Kit foot valve Zeus
35080	Upper and lower gaskets
35113	Complete gaskets kit Zeus (including kit foot valve and sleeve+piston)
35114	Kit sleeve + piston Zeus

Zeus Airless

Powerful - Versatile - Compact - Safe - Easy and limited maintenance

Ref. K35100

With rigid suction system
On trolley 230V
Complete with Accessories



Zeus grants a regular spray pattern without fluctuations.

Designed to stand in the most extreme job conditions.

Able to spray a wide range of products suitable for construction and industrial applications.

Technical Data	
Max delivery	4 l/m
Motor power	2,0 Kw
Max. pressure	220 bar
Voltage	230 VAC – 50 Hz 115 VAC – 60 Hz
Weight on trolley	58 Kg
Max. nozzle size	1 Gun 0,029" 2 Guns 0,017"
Min. power of power generator	5,0 Kw Single-phase

Suitable Application Materials

Smoothers
Stucco
Plasters
Fillers
Bitumens
Intumescent
Encapsulants
Isolants

Elastomers
Waterproofings
Levelling plaster
Pre-mixed plaster (granulometry 0,0)
Epoxy Resins
Etc.....

Accessorie



Ref. 11250
AT250 airless spray gun
¼" fitting

Rif. 11200
AT250 airless spray gun
M16X1,5 fitting



Ref. 18024
Antipulsation hose Ø ¼" with
¼" revolving fitting, 15m

Ref. 18026
Antipulsation hose Ø ¼" with
M16X1,5 revolving fitting, 15m

For the products of medium-high viscosity: plaster, stucco, elastomers we suggest you to use flexible hose Ø 3/8", 15 m Ref. 18510



**Super Fast Clean base
Super Fast Clean nozzle
Stainless Steel Gasket**

- Ref. 11039 30 MESH
- Ref. 11038 60 MESH
- Ref. 11037 100 MESH
- Ref. 11019 200 MESH

Dragon complete with accessories. Nozzle included on choice.

CODE	DESCRIPTION
K30181	*Dragon on trolley with flexible suction system 230V
K30183	*Dragon on trolley flexible suction system 115 V
K30187	*Dragon on trolley with flexible suction system, petrol engine
K30184	*Dragon on trolley with rigid suction system 230V
K30185	*Dragon on trolley with rigid suction system 115V

*Complete with: Pressure gauge

18026 Antipulsation hose Ø 1/4" with M16X1,5 fitting, 15 m

11130 L91X airless spray gun with M16X1,5 revolving fitting and super fast clean base. Ref. 18270

Dragon without accessories

CODE	DESCRIPTION
30181	*Dragon on trolley with flexible suction system 230V
30183	*Dragon on trolley with flexible suction system 115 V
30187	*Dragon on trolley with flexible suction system, petrol engine
30184	*Dragon on trolley with rigid suction system 230V
30185	*Dragon on trolley with rigid suction system 115V

*Complete with line filter, sieve filter 30 mesh, pressure gauge.

Accessories

CODE	DESCRIPTION
18026	Antipulsation hose Ø 1/4" with M16X1,5 fitting, 15 m Optional: Ref.18024 Antipulsation hose Ø 1/4" with 1/4" fitting, 15 m
11130	L91X airless gun with M16X1,5 revolving fitting and super fast clean base. Ref. 18270 Optional: Ref. 11131 L91X airless spray gun with 1/4" revolving fitting and super fast clean base. Ref. 18270
18270	Super fast-clean base
SFC	Super fast clean nozzle

Kit

CODE	DESCRIPTION
40108	Complete lower section repair kit for dragon including piston rod and sleeve
30170	Foot valve kit for dragon
35081	Upper and lower gaskets
30173	Complete gaskets kit for dragon
30174	Sleeve and piston kit
30249	Suction system for laquers

Accessories

CODE	DESCRIPTION
30178	Complete gaskets kit (upper and lower) for dragon
18243	Gravity tank 100lt
18244	Package pressing system for 100-litre tank
18390	Complete package pressing system (gravity tank+package pressing sytem)
20780	Kit turbo air spray <i>Includes:</i> 4 nozzles (4, 6, 8, 10 mm) + 15 m hose To be used together with Super fast-clean nozzle



DRAGON Airless

Powerful- Versatile – Compact- Safe – Easy and limited maintenance
The new filter guarantees the max aspiration for dense products

Ref. K30184

On trolley 230 V

Complete with accessories



Ref. 11130
L91X spray gun fitting M16X1,5
Ref. 11131
L91X spray gun fitting 1/4"



Ref. 18024
Antipulsation hose Ø 1/4" with 1/4" fitting, 15 m
Ref. 18026
Antipulsation hose Ø 1/4" with M16X1,5 fitting, 15 m

For the products of medium-high viscosity: plaster, stucco, elastomers we suggest you to use flexible hose Ø 3/8", 15m Ref. 18510

Dragon grants a regular spray pattern without fluctuations.

Designed to stand in the most extreme job conditions.

Able to spray a wide range of products suitable for construction and industrial applications.

Technical Data

Max delivery	5 l/m
Motor power	2, 4 Kw
Max. pressure	230 bar
Voltage	230 VAC - 50 Hz
Weight on trolley	66 Kg
Max. nozzle size	1 Gun 0, 033" 2 Guns 0, 019"
Min. power of power generator	5 Kw Single-phase

Suitable Application Materials

Fire retardants
Intumescent
Insulation coatings
Water proofing
Plasters
Paste stucco
Etc....

Textured acrylics and elastomerics
Eifs and synthetic stucco finish coats
Deck coatings
Roofing



Super Fast Clean base
Super Fast Clean nozzle
Stainless Steel Gasket

Thor complete with accessories. Nozzle included on choice.

CODE	DESCRIPTION
K20725	*Thor on trolley with rigid suction system and return 230 V
K20720	*Thor on trolley with flexible suction system and return 230 V
K20702	*Thor on trolley with flexible suction system and return, petrol engine

***Complete with:**

- Pressure gauge, toolbox
- 18510** Antipulsation hose Ø 3/8" with M16x1,5 fitting, 15m
- 11130** L91X airless spray gun with M16X1,5 revolving fitting and super fast-clean base Ref. 18270

Thor without accessories

CODE	DESCRIPTION
20705	Thor on trolley with rigid suction system and return 230 V
20700	Thor on trolley with flexible suction system and return 230 V
20702	Thor on trolley with flexible suction system and return, petrol engine

Accessories

CODE	DESCRIPTION
18510	Antipulsation hose Ø 3/8" with M16x1,5 fitting, 15m
11130	L91X airless gun with M16X1,5 revolving fitting and super fast clean base. Ref. 18270 Optional: Ref. 11131 L91X airless spray gun with 1/4" revolving fitting and super fast clean base. Ref. 18270
147	Pressure gauge with revolving fitting M16X1,5
18270	Super Fast Clean base
SFC	Super Fast Clean nozzle

Accessories

CODE	DESCRIPTION
20550	Suction system with return (thor flexible suction system)
18243	Gravity tank 100lt
18244	Package pressing system for 100-litre tank
18390	Complete package pressing system (gravity tank+package pressing system)
20780	Kit turbo air spray <i>Includes:</i> 4 nozzles (4, 6, 8, 10 mm) + 15 m hose To be used together with Super fast-clean nozzle

Kit

CODE	DESCRIPTION
20100	Complete lower section for Thor with rigid suction system
20652	Complete lower section for Thor with flexible suction system
40109	Complete lower section repair kit Thor including piston rod and sleeve
20170	Foot valve kit for thor with rigid suction system
20171	Foot valve kit for thor with flexible suction system
20173	Complete gaskets kit for thor

Thor Airless

Powerful - Versatile - Compact - Safe – Simple and limited maintenance



Ref. K20725

On trolley.
Complete with accessories.

Thor grants a regular spray pattern without fluctuations. Designed to stand in the most extreme job conditions. Able to spray a wide range of products suitable for construction and industrial applications.



Ref. 11130
L91X spray gun fitting M16X1,5
Ref. 11131
L91X spray gun fitting 1/4"



Ref. 18510
Antipulsation hose Ø 3/8" with M16x1,5 fitting, 15m



L91X Airless spray gun with Turbo Air Spray



Package pressing system + 100-litre tank

Ref. K20702

Version petrol engine



Suitable application materials

- Fire retardant
- Intumescent
- Insulation coatings
- Water proofing
- Plasters
- Paste Stucco
- Roofing
- Deck Coatings
- Textured Acrylics and Elastomerics
- Eifs and synthetic
- Stucco finish coats

Technical Data	
Max delivery	7,5 l/m
Motor power	2,8 Kw
Max. pressure	230 bar
Voltage	230 VAC - 50 Hz 115 VAC - 60 Hz
Weight on trolley	76 Kg
Max. nozzle size	1 Gun 0,051" 2 Guns 0,027"
Minimum power for power generator	6 Kw Single-phase



Super Fast Clean base
Super Fast Clean nozzle
Stainless Steel Gasket



Ref. 37410
Complete line filter

Mirò complete with accessories. Nozzle included on choice.

CODE	DESCRIPTION
K21501	*Mirò on trolley with suction system and return 230v
K21503	*Mirò on trolley with suction system and return 115v
K21505	*Mirò on trolley with suction system and return petrol engine
K21507	*Mirò on trolley with gravity tank 230v
K21509	*Mirò on trolley with gravity tank 115v
K21511	*Mirò on trolley with gravity tank petrol engine
K21565	*Mirò on frame with gravity tank 230v
K21561	*Mirò on frame with suction system and return 230v
K21563	*Mirò on frame with suction system and return 115v

***Complete with:**

- Pressure gauge, toolbox
- 35018 Braid stainless steel high pressure hose Ø 3/16" with M16X1,5 fitting mt.10.
- 11200 AT250 airless gun with M16X1,5 revolving fitting and super fast clean base Ref. 18270

Mirò without accessories

CODE	DESCRIPTION
21500	Mirò on trolley with suction system and return 230v
21502	Mirò on trolley with suction system and return 115v
21504	Mirò on trolley with suction system and return petrol engine
21506	Mirò on trolley with gravity tank 230v
21508	Mirò on trolley with gravity tank 115v
21510	Mirò on trolley with gravity tank petrol engine
21564	Mirò on frame with gravity tank 230v
21560	Mirò on frame with suction system and return 230v
21562	Mirò on frame with suction system and return 115v

Accessories

CODE	DESCRIPTION
35018	Braid stainless steel high pressure hose Ø 3/16" with M16X1,5 fitting mt.10.
11200	AT250 airless gun with M16X1,5 revolving fitting and super fast clean base. Ref. 18270 Optional: Ref.11250 AT 250 spray gun with 1/4" revolving fitting and super fast clean base. Ref. 18270
18270	Super Fast Clean base
SFC	Super Fast Clean nozzle

Accessories

CODE	DESCRIPTION
35101	Gravity tank 6lt
18235	Complete system with gravity tank 50 lt
18241	Gravity tank 50 lt with basket
18242	Trolley complete with 50 lt gravity tank

Kit

CODE	DESCRIPTION
21590	Complete suction valve
32150	Pressure regulating valve
21613	Discharge valve
53002	Complete diaphragm

Mirò Airless

Powerful - Versatile - Compact - Safe – Simple and limited maintenance



Ref. 21500

Mirò on trolley + suction system with recirculation

Mirò grants a regular spray pattern without fluctuations.

Ref. K21565

On frame Complete with accessories



Suitable application materials

- Lacquers
- Waterborne
- Acrylic
- Primers
- Enamels
- Fixative
- Paints
- Emulsions
- Fillers
- Anti-rust
- Primer

Technical Data

Max delivery	2 , 2 l/m
Motor power	0 , 75 Kw
Max. pressure	250 bar
Voltage	230 VAC - 50 Hz
Weight on frame	20 Kg
Weight on trolley	23 Kg
Max. nozzle size	1 Gun 0 , 019"
Minimum power for power generator	4 , 0 Kw Single-phase

Accessories



Ref. 11250

AT250 airless spray gun 1/4" fitting

Rif . 11200

AT250 airless spray gun M16X1,5 fitting



Ref. 35018

Braid stainless steel high pressure hose Ø 3/16" with 16x1,5 fitting 10 m

Ref. 18017

High pressure hose Ø 3/16" with 1/4" fitting 10 m



Super Fast Clean base
Super Fast Clean nozzle
Stainless Steel Gasket

Ref. 11039 30 MESH

Ref. 11038 60 MESH

Ref. 11037 100 MESH

Ref. 11019 200 MESH

Dali complete with accessories. Nozzle included on choice.

CODE	DESCRIPTION
K18957	*Dali on trolley with suction system and return 230v
K18958	*Dali on trolley with suction system and return 115v
K18959	*Dali on trolley with suction system and return 400v
K18965	*Dali on trolley with gravity tank 6lt 230v
K18966	*Dali on trolley with gravity tank 6lt 115v
K18967	*Dali on trolley with gravity tank 6lt 400v
K18945	*Dali on trolley with gravity tank 50lt 230v

***Complete with:**

Pressure gauge, toolbox

35017 Braid stainless steel high pressure hose Ø 1/4" with M16X1,5 fitting mt.10

11200 AT250 airless gun with M16X1,5 revolving fitting and super fast clean base Ref. 18270

Dali Without Accessories

CODE	DESCRIPTION
18900	Dali on trolley with suction system and return 230v
18920	Dali on trolley with suction system and return 115v
18955	Dali on trolley with suction system and return 400v
18961	Dali on trolley with gravity tank 6lt 230v
18962	Dali on trolley with gravity tank 6lt 115v
18963	Dali on trolley with gravity tank 6lt 400v
18945	Dali on trolley with gravity tank 50lt 230v

Accessories

CODE	DESCRIPTION
35017	Braid stainless steel high pressure hose Ø 1/4" with M16X1,5 fitting mt.10
11200	AT250 airless gun with M16X1,5 revolving fitting and super fast clean base. Ref. 18270 Optional: Ref.11250 AT 250 spray gun with 1/4" revolving fitting and super fast clean base. Ref. 18270
18270	Super Fast Clean base
SFC	Super Fast Clean nozzle

Accessories

CODE	DESCRIPTION
35101	Gravity tank 6lt
18235	Complete system with gravity tank 50 lt
18241	Gravity tank 50 lt
18242	Trolley complete with 50 lt gravity tank

Kit

CODE	DESCRIPTION
40234	Diaphragm kit
33017	Complete suction valve
33033	Complete discharge valve
32150	Complete pressure regulating valve
33016	Complete return valve

Dali Airless

Powerful - Versatile - Compact - Safe - Simple and limited maintenance



Ref. K18957

On trolley with suction system with recirculation
Complete with accessories

Ref. K18945

On trolley with tank lt.50
Complete with accessories



Dali grants a regular spray pattern without fluctuations.

Suitable application materials

Lacquers
Waterborne
Acrylic
Primers
Enamels
Fixative
Paints

Emulsions
Fillers
Anti-rust
Primer

Technical Data	
Max delivery	4 l/m
Motor power	1 , 1 Kw
Max. pressure	250 bar
Voltage	230 VAC - 50 Hz
Weight	38 Kg
Max. nozzle size	0 , 025"
Minimum power for power generator	4 , 0 Kw Single-phase

Accessories



Ref. 11250

AT250 airless spray gun
1/4" fitting

Rif . 11200

AT250 airless spray gun
M16X1,5 fitting



Ref. 35017

Braid stainless steel high pressure hose Ø 1/4" with 16x1,5 fitting 10 m

Ref. 18023

High pressure hose Ø 1/4" with 1/4" fitting 10 m



Super Fast Clean base
Super Fast Clean nozzle
Stainless Steel Gasket



Giotto complete with accessories. Nozzle included on choice.

CODE	DESCRIPTION
K12480	*Giotto on trolley with suction system and return 230v
K12482	*Giotto on trolley with suction system and return 115v
K12481	*Giotto on trolley with suction system and return 400v
K12483	*Giotto on trolley with suction system and return petrol engine
K12458	*Giotto on trolley with gravity tank 50lt

***Complete with:**
Pressure gauge
35017 Braid stainless steel high pressure hose Ø 1/4" with M16X1,5 fitting mt.10
11000 AT300 spray gun with M16X1,5 revolving fitting and super fast clean base. Ref. 18270

Giotto without accessories

CODE	DESCRIPTION
12450	Giotto on trolley with suction system and return 230v
12452	Giotto on trolley with suction system and return 115v
12451	Giotto on trolley with suction system and return 400v
12453	Giotto on trolley with suction system and return petrol engine
12458	Giotto on trolley with gravity tank 50lt

Accessories

CODE	DESCRIPTION
35017	Braid stainless steel high pressure hose Ø 1/4" with M16X1,5 fitting mt.10
11000	AT 300 airless spray gun with M16 x1.5 revolving fitting and super fast clean base. Ref. 18270 In opzione. Ref.11090 AT300 airless spray gun with 1/4" revolving fitting and super fast clean base. Ref. 18270
18270	Super Fast Clean base
SFC	Super Fast Clean nozzle

Accessories

CODE	DESCRIPTION
85500	Suction system support
18240	Complete system with gravity tank 50lt for Giotto
18241	Gravity tank 50lt
18242	Trolley complete with 50 lt gravity tank
20780	Kit turbo air spray <i>Includes:</i> 4 nozzles (4, 6, 8, 10 mm) + 15 m hose To be used together with Super fast-clean nozzle

Kit

CODE	DESCRIPTION
40365	Kit second gun
40175	Complete diaphragm kit
33017	Complete suction valve
83033	Complete discharge valve
32150	Complete pressure regulating valve
33013/2	Complete return valve

Giotto Airless

Powerful - Versatile - Compact - Safe - Easy and limited maintenance

Ref. 12450

Complete suction system with recirculation

Giotto grants a regular spray pattern without fluctuations.



Ref. 12453

On trolley version.
Petrol engine Giotto.

Motor power Yamaha 10 HP

Ref. K12458

On Trolley with 50-litre tank
Complete with accessories



Suitable Application Materials

- | | |
|------------------|-------------|
| Lacquers | Emulsions |
| Water paints | Impregnants |
| Acrylic | Antirust |
| Undercoat paints | Primer |
| Enamels | Bitumens |
| Fixatives | |
| Varnishes | |

Technical Data

Max. flow rate	8 l/m
Motor power	2 , 2 Kw
Max. pressure	250 bar
Battery	230 VAC - 50 Hz
Weight on trolley	50 Kg
Max. nozzle size	0 , 031"
Minimum requirement power unit	5 , 5 Kw Single-phase

Accessories



Ref. 11090
AT300 spray gun fitting 1/4"

Ref. 11000
AT300 spray gun fitting M16X1,5



Ref. 35017
Braid stainless steel high pressure hose Ø 1/4" with 16x1,5 fitting 10 m

Ref. 18023
High pressure hose Ø 1/4" with 1/4 fitting 10 m



Super Fast Clean base
Super Fast Clean nozzle
Stainless Steel Gasket

Ref. 11039 30 MESH

Ref. 11038 60 MESH

Ref. 11037 100 MESH

Ref. 11019 200 MESH

Complete Pegaso

CODE	DESCRIPTION
30580	Pegaso 230 V Turbo Gun
30581	Pegaso 230 V Tex Gun
30591	Pegaso 115 V Turbo Gun
30595	Pegaso 115 V Tex Gun

Accessories

CODE	DESCRIPTION
21050	Turbo Gun with six nozzles Ø 3,4,6,8,10,12 mm
21073	Nozzle Ø 3 mm Turbo gun
21074	Nozzle Ø 4 mm Turbo gun
21075	Nozzle Ø 6 mm Turbo gun
21076	Nozzle Ø 8 mm Turbo gun
21077	Nozzle Ø 10 mm Turbo gun
21078	Nozzle Ø 12 mm Turbo gun
21079	Turbo Gun material needle
21096	Kit repair Turbo Gun
20820	Tex gun including 3 nozzles sizes Ø 4,6,8 mm
14310	Hopper gun including 3 nozzles sizes Ø 4,6,8 mm
14401	Nozzle Ø 4 mm Tex Gun and Hopper Gun
14402	Nozzle Ø 6 mm Tex Gun and Hopper Gun
14403	Nozzle Ø 8 mm Tex Gun and Hopper Gun
14405	Tex Gun and Hopper Gun material needle
14404	Fitting regulation screw for rod Tex Gun – Hopper Gun
14407	Rod regulation screw Tex Gun and Hopper Gun
14406	Needle regulation screw for tex gun and Hopper gun
30535	Hose for peristaltic pump
30575	Gun hose 25x33, 10 m
30588	Sponge balls for cleaning peristaltic pump hose (10+10)
18241	Gravity tank 50 lt
18242	Gravity tank 50 lt on trolley
217550	Portable electric mixer MX850 850 W
217560	Portable electric mixer MX1100 1080 W
217570	Portable electric mixer MX1100E 1080 W

Pegaso

Designed for water based materials with solid content up to 3 mm

Ref. 30580 Version with TURBO GUN



Technical Data	
Voltage	220 V 115 V
Max water pressure	7 l/m
Max flow pressure	10 bar
Max air pressure	7 bar
Power	0,18 Kw
Compressor	1,5 Kw – 283 l/m
Motogenerator	9,0 Kw Singlephase
Weight complete machine	110 Kg
*Max hose length	30 mt
Max solid content for the gun	3 mm
Drum capacity	50 l
Acoustic level	Max. 60 db (A)

* The hose length is based on the viscosity and density of used materials.

Suitable Application Materials

Water based products solid content 3 mm

- | | |
|-----------------|----------------|
| Acoustic | Concrete based |
| Plaster | Silicate Paint |
| Waterproofing | Filler |
| Adhesive cement | Textures |

Cement materials that can be used with resin-based binder

ACCESSOIRES



Ref. 21050
Turbo Gun
Nozzles: 3-4-6-8-10-12mm



Special peristaltic pump



Compressor powerful and noiseless



Control board



Hose fittings: you can disassembly the hose without tools

Complete Pegaso Light

CODE	DESCRIPTION
20855	Pegaso Light 230 V Turbo Gun
20856	Pegaso Light 230 V Tex Gun
20865	Pegaso Light 115 V Turbo Gun
20866	Pegaso Light 115 V Tex Gun

Accessories

CODE	DESCRIPTION
21050	Turbo Gun with six nozzles Ø 3,4,6,8,10,12 mm
21073	Nozzle Ø 3 mm Turbo gun
21074	Nozzle Ø 4 mm Turbo gun
21075	Nozzle Ø 6 mm Turbo gun
21076	Nozzle Ø 8 mm Turbo gun
21077	Nozzle Ø 10 mm Turbo gun
21078	Nozzle Ø 12 mm Turbo gun
21079	Turbo Gun material needle
21096	Kit repair Turbo Gun
20820	The Tex Gun includes three nozzles sizes Ø 4,6,8 mm
14310	The Hopper Gun includes three nozzles sizes Ø 4,6,8 mm
14401	Nozzle Ø 4 mm Tex Gun and Hopper Gun
14402	Nozzle Ø 6 mm Tex Gun and Hopper Gun
14403	Nozzle Ø 8 mm Tex Gun and Hopper Gun
14405	Tex Gun and Hopper Gun material needle
14404	Fitting regulation screw for rod Tex Gun – Hopper Gun
14407	Rod regulation screw Tex Gun and Hopper Gun
14406	Kit Tex Gun and Hopper Gun
30535	Hose for peristaltic pump
30575	Gun hose 25x33, 10 m
30588	Sponge balls for cleaning peristaltic pump hose (10+10)
18241	Gravity tank 50 lt
18242	Gravity tank 50 lt on trolley
217550	Portable electric mixer MX850 850 W
217560	Portable electric mixer MX1100 1080 W
217570	Portable electric mixer MX1100E 1080 W

Pegaso Light

Designed for water based materials with solid content up to 3mm
Ref. 20855 Version with TURBO GUN



Technical Data	
Voltage	230 V 115 V
Max water pressure	7 l/m
Max flow pressure	10 bar
Max air pressure	7 bar
Power	0,18 Kw
Weight complete machine	70 Kg
*Max hose lenght	30 mt
Max solid content for the gun	3 mm
Drum capacity	50 l

* Max hose lenght according to the material viscosity and density.

Suitable Application Materials
Water based products solid content 3mm

Acoustic Plaster
Waterproofing
Adhesive cement concrete based

Silicate paint filler
texture

** Cement materials that can be used with rasin-based binder **

ACCESSORIES



Ref. 21050
Turbo Gun
Nozzles: 3-4-6-8-10-12 mm



Special peristaltic pump



Control board



Hose fittings:
you can disassembly the hose without tools

Complete Minipegaso

CODE	DESCRIPTION
20870	Minipegaso Pneumatic equipment with Tex Gun
20871	Minipegaso Pneumatic equipment with Turbo Gun

Accessories

CODE	DESCRIPTION
21050	Turbo Gun with six nozzles Ø 3,4,6,8,10,12 mm
21073	Nozzle Ø 3 mm Turbo gun
21074	Nozzle Ø 4 mm Turbo gun
21075	Nozzle Ø 6 mm Turbo gun
21076	Nozzle Ø 8 mm Turbo gun
21077	Nozzle Ø 10 mm Turbo gun
21078	Nozzle Ø 12 mm Turbo gun
21079	Turbo Gun material needle
21096	Kit repair Turbo Gun
20820	The Tex Gun includes three nozzles sizes Ø 4,6,8 mm
14310	The Hopper Gun includes three nozzles sizes Ø 4,6,8 mm
14401	Nozzle Ø 4 mm Tex Gun and Hopper Gun
14402	Nozzle Ø 6 mm Tex Gun and Hopper Gun
14403	Nozzle Ø 8 mm Tex Gun and Hopper Gun
14405	Tex Gun and Hopper Gun material needle
14404	Fitting regulation screw for rod Tex Gun – Hopper Gun
14407	Tex Gun and Hopper Gun rod regulation screw
14406	Kit Tex Gun and Hopper Gun
20830	Inner tube Ø 19 mm.x26 m. 5
20835	Inner tube Ø 19 mm.x26 m.10
20840	Inner tube Ø 19 mm.x26 m. 15
30535	Hose for peristaltic pump
30575	Gun hose 25x33, 10 m
30588	Sponge balls for cleaning peristaltic pump hose (10+10)
18241	Gravity tank 50 lt
18242	Gravity tank 50 lt on trolley
217550	Portable electric mixer MX850 850 W
217560	Portable electric mixer MX1100 1080 W
217570	Portable electric mixer MX1100E 1080 W

Kit

CODE	DESCRIPTION
40332	Motor gaskets
40336/1	Anti-Abrasive ball seat kit Larius 4
40337/1	Anti-abrasive membrane kit Larius 4

Minipegaso

Designed for water based materials with solid content up to 2/3 mm

Ref. 20870 Version with Tex GUN



Technical Data	
Power	Compressed air
Max. water flow rate	40 l/m
Max. fluid pressure	7 bar
Max. air pressure	7 bar
Complete machine weight	47 Kg
*Max hose length	30 mt
Max. granulometry with gun	2/3 mm
Hopper capacity	50 l
noise level	Max. 50 db (A)

* Hose length according to viscosity and thickness of used material

Suitable Application Materials

Water based products solid content 2/3 mm

- | | |
|-----------------|----------------|
| Acoustic | Concrete based |
| Plaster | Silicate paint |
| Waterproofing | Filler |
| Adhesive Cement | Textures |

Cement materials that can be used with resin-based binder

ACCESSORIES



**Ref. 21050
Turbo Gun**
Nozzles: 3-4-6-8-10-12 mm



**Ref. 20820
Hopper Gun**
Nozzles: 4-6-8 mm



**Ref. 14310
Hopper Gun**
Nozzles: 4-6-8 mm

Complete Ghibli 10:1 texture

CODE	DESCRIPTION
30582	Ghibli 10:1 texture complete with turbo gun

Accessories

CODE	DESCRIPTION
21050	Turbo Gun with six nozzles Ø 3,4,6,8,10,12 mm
21073	Nozzle Ø 3 mm Turbo gun
21074	Nozzle Ø 4 mm Turbo gun
21075	Nozzle Ø 6 mm Turbo gun
21076	Nozzle Ø 8 mm Turbo gun
21077	Nozzle Ø 10 mm Turbo gun
21078	Nozzle Ø 12 mm Turbo gun
21079	Turbo Gun material needle
21096	Turbo Gun repair gun
20820	The Tex Gun includes three nozzles sizes Ø 4,6,8 mm
14310	The Hopper Gun includes three nozzles sizes Ø 4,6,8 mm
14401	Nozzle Ø 4 mm Tex Gun and Hopper Gun
14402	Nozzle Ø 6 mm Tex Gun and Hopper Gun
14403	Nozzle Ø 8 mm Tex Gun and Hopper Gun
14405	Tex Gun and Hopper Gun material needle
14404	Fitting regulation screw for rod Tex Gun – Hopper Gun
14407	Tex Gun and Hopper Gun rod regulation screw
14406	Kit Tex Gun and Hopper Gun
4064	30-litre tank
18585	Antipulsation hose 1/2". Price for metre

Kit

CODE	DESCRIPTION
40236	Gaskets kit

Ghibli 10:1 Texture

Prodotto per gestire fluidi a base acqua privi di granulometria

Rif. 30582 Versione con pistola Turbo Gun



Rif. 21050
Pistola Turbo Gun
Ugelli: 3-4-6-8-10-12 mm



Rif. 14310
Pistola Hopper Gun
Ugelli: 4-6-8 mm

Caratteristiche	
Alimentazione	Aria compressa
Portata max acqua	15 l/m
Pressione max fluido	20 bar
Pressione max aria	2-3 bar
Peso macchina completa	17 Kg
*Max lunghezza tubo	30 mt
Capacità serbatoio	30 l
Livello acustico	Max. 50 db (A)

* La lunghezza del tubo è in base alla viscosità e alla densità del materiale utilizzato

Prodotti e materiali di applicazione

Prodotti a base acqua privi di granulometria

- | | |
|-----------------------|----------------------|
| Rasanti | Sigillanti cementizi |
| Stucchi e Gessi | Adesivi cementizi |
| Rivestimenti in fibra | Intonaci granulari |
| Riempitivi | Intonaci cementizi |
| Impermeabilizzanti | Intonaci riempitivi |
| Malte insonorizzate | Vernici in silicato |

** Materiali cementizi con leganti a base resine **

2K GHIBLI 15:1 PUMP WITH DOUBLE FLUID SECTION

CODE	DESCRIPTION
ENG 1008	2K Ghibli 15:1 Pump With Double Fluid Section

The pump is composed of a Ghibli motor and a Ghibli 30:1 stainless steel double fluid section.

It is suitable for 2K resins with fixed mixing ratio 1:1

Examples of application: consolidation of foundation or walls

Technical features	
Mixing ratio	1:1
Pressure ratio	15:1
Max feeding pressure	7 bar
Max delivery	8 lt/min (4 l/min for each fluid section)
Max no.of cycles per minute	60
Max working pressure	105 bar



2K OMEGA 40:1 PUMP WITH DOUBLE FLUID SECTION

CODE	DESCRIPTION
ENG 1006	2K Omega 40:1 Pump With Double Fluid Section

The pump is composed of an Omega motor and a Ghibli 30:1 stainless steel double fluid section.

It is suitable for 2K resins with fixed mixing ratio 1:1

Examples of application: consolidation of foundation or walls

Technical features	
Mixing ratio	1:1
Pressure ratio	40:1
Max feeding pressure	7 bar
Max delivery	8 lt/min (4 l/min for each fluid section)
Max no.of cycles per minute	60
Max working pressure	280 bar

2K NOVA 30:1 PUMP WITH DOUBLE FLUID SECTION

CODE	DESCRIPTION
ENG 1007	2K Nova 30:1 Pump With Double Fluid Section

The pump is composed of a Nova motor and a Nova 60:1 stainless steel double fluid section.

It is suitable for 2K resins with fixed mixing ratio 1:1

Examples of application: consolidation of foundation or walls

Technical features	
Mixing ratio	1:1
Pressure ratio	30:1
Max feeding pressure	7 bar
Max delivery	18 lt/min (9 l/min for each fluid section)
Max no.of cycles per minute	60
Max working pressure	210 bar

2K GHIBLI 10:1 PUMP STANDARD

CODE	DESCRIPTION
ENG 1002	2K Ghibli 10:1 Pump Standard

The pump is composed of 2 stainless steel Ghibli 10:1 pumps

It is suitable for 2K products with mixing ratio 1:1

Equipped with pneumatic regulators

Technical features	
Mixing ratio	1:1
Pressure ratio	10:1
Max feeding pressure	7 bar
Max delivery	30 lt/min (15 lt/min for each fluid section)
Max no.of cycles per minute	60
Max working pressure	70 bar



2K GHIBLI 10:1 PUMP WITH HEATERS

CODE	DESCRIPTION
ENG 1001	2K Ghibli 10:1 Pump With Heaters

The pump is composed of 2 stainless steel Ghibli 10:1 pumps

It is suitable for 2K products with mixing ratio 1:1

Equipped with pneumatic regulators + heaters

Technical features	
Mixing ratio	1:1
Pressure ratio	10:1
Max feeding pressure	7 bar
Max delivery	30 lt/min (15 lt/min for each fluid section)
Max no.of cycles per minute	60
Max working pressure	70 bar
Heaters power	4,5 Kw



VERTICAL MIRÒ PUMP FOR INJECTION

CODE	DESCRIPTION
K21571	Vertical Mirò for injection on frame

Complete with:
 Ref. 6164 Antistatic hose Ø 3/16" with M16X1,5 fitting 5 m
 Ref. 33034 Ball valve
 Ref. 21570 M10x1 fitting
 Ref. 147 High pressure gauge, M16X1,5 M+female revolving fitting. ,
 Double concentric scale 0-400 Bar and 0-5800 psi

Technical Data	
Max. delivery	2, 2 l/m
Motor power	0, 75 Kw
Max. pressure	250 bar
Voltage	230 VAC - 50 Hz
Weight on frame	20 Kg
Weight on trolley	23 Kg
Min. power of power generator	4, 0 Kw Single-phase



MIRÒ' COLD INJECTION PUMP

Suitable for heat-sensitive resins.

CODE	DESCRIPTION
K21571/1	Mirò Cold Injection Pump on trolley

Complete with:
 Ref. 6164 Antistatic hose Ø 3/16" with M16X1,5 fitting 5 m
 Ref. 33034 Ball valve
 Ref. 21570 M10x1 fitting
 Ref. 147 High pressure gauge, M16X1,5 M+female revolving fitting. ,
 Double concentric scale 0-400 Bar and 0-5800 psi

Technical Data	
Max. delivery	2, 2 l/m
Motor power	0, 75 Kw
Max. pressure	250 bar
Voltage	230 VAC - 50 Hz
Weight on frame	20 Kg
Weight on trolley	23 Kg
Min. power of power generator	4, 0 Kw Single-phase



DALI' COLD INJECTION PUMP

Suitable for heat-sensitive resins.

CODE	DESCRIPTION
K18968/3	Dali' Cold Injection Pump on trolley

Complete with:
 Ref. 6164 Antistatic hose Ø 3/16" with M16X1,5 fitting 5 m
 Ref. 33034 Ball valve
 Ref. 21570 M10x1 fitting
 Ref. 147 High pressure gauge, M16X1,5 M+female revolving fitting. ,
 Double concentric scale 0-400 Bar and 0-5800 psi

Technical Data	
Max. delivery	4 l/m
Motor power	1, 1 Kw
Max. pressure	250 bar
Voltage	230 VAC - 50 Hz
Weight on frame	38 Kg
Weight on trolley	0, 025"
Min. power of power generator	4, 0 Kw Monofase



JOLLY INJECTION PUMP

CODE	DESCRIPTION
K56500/3	Jolly Injection Pump on frame
K56500/4	Jolly Injection Pump on trolley

Complete with:
 Ref. 18026 Antipulsation hose Ø 1/4" with M16X1,5 fitting m.15
 Ref.33034 Ball valve
 Ref.21570 M10X1 fitting
 Ref. 147 High pressure gauge, M16X1,5 M+female revolving fitting. ,
 Double concentric scale 0-400 Bar and 0-5800 psi

Technical Data	
Max delivery	1,9 l/m
Motor power	0,65 Kw
Max. pressure	220 bar
Voltage	115 / 230 VAC
Weight on frame	15 kg
Weight on trolley	16kg
Max. nozzle size	0,021"
Min. power of power generator	4,0 Kw Single-phase



ZEUS INJECTION PUMP

CODE	DESCRIPTION
K35100/2	Zeus Injection Pump on trolley

Complete with:
 Ref.18026 Antipulsation hose Ø 1/4" with M16X1,5 fitting m.15
 Ref.33034 Ball valve
 Ref.21570 M10X1 fitting
 Ref. 147 High pressure gauge, M16X1,5 M+female revolving fitting. ,
 Double concentric scale 0-400 Bar and 0-5800 psi

Technical Data	
Max delivery	4 l/m
Motor power	2,0 Kw
Max. pressure	220 bar
Voltage	230 VAC - 50 Hz 115 VAC - 60 Hz
Weight on trolley	58 Kg
Max. nozzle size	1 Gun 0,029" 2 Guns 0,017"
Min. power of power generator	9,0 Kw Single-phase



MINIPEGASO INJECTION PUMP

CODE	DESCRIPTION
K20870/2	Minipegaso Injection Pump on trolley

Complete with:
 Ref.18510 Antipulsation hose Ø 3/8" with M16X1,5 fitting m.15
 Ref.33034 Ball valve
 Ref.21570 M10X1 fitting
 Ref. 147 High pressure gauge, M16X1,5 M+female revolving fitting. ,
 Double concentric scale 0-400 Bar and 0-5800 psi

Technical Data	
Power	Compressed air
Max. water flow rate	40 l/m
Max. fluid pressure	7 bar
Max. air pressure	7 bar
Complete machine weight	47 Kg
*Max hose length	30 mt
Hopper capacity	50 l
noise level	Max. 50 db (A)



“EASY PRODUCTION CYCLES & FULL MIXING ACCURACY”

The world is full of color. We offer Larius for the best result!

“Better adhesion and resistance of the colour thanks to the product currently being mixed”

Mini Mix 2K, Multi Mix K, Ghibli Mix 2k, Vega Mix 2K, Nova Mix 2K LARIUS spraying and mixing equipments allow for painting with reliability and full mixing accuracy with either 2K water based and solvent based paints.

WORKING PRINCIPLE

A and B components and the flushing solvent flow into the system through the remote feeding pumps. The pumps can be either double diaphragm and piston pumps and the device can work at low, medium and high pressure with no modifications required.

Two flow metering devices detect the volume of A and B products supplied by the pumps and send a signal to the PLC. A and B components are metered according to the set mixing ratio by the metering valves.

After having been correctly metered A and B components flow through the mixing head that mixes the two components into a consistent fluid carried with the set pressure to the spray gun.

According to the product pot life, a timer can be set in order to activate an alarm thus preventing the already mixed product from hardening inside the machine and hoses.

Mini Mix 2K, Multi Mix K, Ghibli Mix 2k, Vega Mix 2K, Nova Mix 2K LARIUS provide the correct mixing ratio also when spraying operations require a frequent gun triggering.

WORKING ADVANTAGES

- High quality finishing
- Easier production cycles
- Avoids the manual mixing of 2 K products thus preventing from wrong mixing and large product waste
- Automatic control of the mixing ratio within the set parameters
- Versatile working (operate at low-medium-high pressure with manual, automatic and electrostatic spray guns)
- Constant flow rate, better adhesion and resistance of the color, thanks to the product currently being mixed
- Quick paint drying time
- Easy and friendly setting and control buttons

APPLICATIONS

- Metering electronic control
- Failure alarms
- Flow control of the A and B components
- Mixing ratio control
- Pot life time alarm
- Mixing ratio accuracy control and alarm
- Flushing operations set and control
- Cleaning time control
- Paint temperature control through LARIUS heater

“Easy production cycles, full mixing accuracy”



	VEGA MIX 2K	GHIBLI MIX 2K	NOVA MIX 2K
Number of components	2	2	2
Mixing ratio Decimals included	Min 1:1 max 30:1	Min 1:1 max 30:1	Min 1:1 max 30:1
Ratio guarantee	1 %	1 %	1 %
Max. working pressure:	0-400 Bar	0-320 Bar	0-400 Bar
Max. pressure Air supply	6 Bar	8 Bar	6 Bar
Electric power supply	230 V or pneumatic power supply	230 V or pneumatic power supply	230 V or pneumatic power supply
* Max. flow rate of mixed product	*Max 4 lt min	*Max 4 lt min	*Max 14 lt min
Maximum viscosity	Max 20000- cSt	Max 20000- cSt	Max 35000- cSt
* Depending on the paints used, the supply pressure and the mixing ratio			
Number of colours	1	1	1
Number of catalysts	1	1	1
Flow control	External sensor	External sensor	External sensor
Spray gun cleaning box	Upon request	Upon request	Upon request
Integrated automation	Upon request	Upon request	Upon request
Sound pressure	79 dB	79 dB	79 dB
Paint compatibility	2 component water-soluble paint - 2 component solvent-based paint		
Material in contact with the fluid	Mini Mix and Mix 2K stainless steel / Ghibli Mix and Nova Mix Stainless steel or Galvanised		

Prices on demand

Ghibli 40:1 Mix 2K with stainless steel flowmeters

CODE	DESCRIPTION
24560	Ghibli 40:1 Mix 2K Stainless steel + stainless steel flowmeters
24565	Ghibli 40:1 Mix 2K Stainless steel + stainless steel flowmeters and Air electric generator
24561	Ghibli 40:1 Mix 2K Stainless Steel
24566	Ghibli 40:1 Mix 2K Stainless Steel + Air Electric Generator

Ghibli Mix 40:1 2K systems

basically consist of:

- Trolley easy to move and easy to integrate into the working environment
- PLC control with worksite protection and anti-intrusion
- Ghibli 40:1 Stainless steel pumps
- Ghibli 30:1 pumps for cleaning
- "FRL" group and pneumatic filters 1"
- Valve and mixing system connected to the PLC
- Flowmeters in stainless steel PTFE or dosage control system (not in contact with the product)

Ghibli 40:1 Mix 2K Accessories

CODE	DESCRIPTION
24575	Heaters Kit in stainless steel complete with stainless steel fittings and supports.
24580	50lt gravity tanks kit.
18065	H.P. hose diam 3/8", 15m 16x1,5 fitting
11130	L91X spray gun with M16X1,5 revolving fitting
11703	LA 95 2K. External mixing
11756	Bicomponent Gun for dense products
18270	Super Fast Clean base
SFC	Super Fast Clean Nozzle
24585	Remote mixing system

Vega 5:1 Mix 2K System

CODE	DESCRIPTION
24571	Vega mix 2K 5:1 stainless steel

* The Systems works with:

- W71 low pressure spray gun

Vega 5:1 Mix 2K Accessories

CODE	DESCRIPTION
24575	Heaters kit in stainless steel complete with stainless steel fittings and supports
24580	50lt gravity tanks kit
18065	H.P. hose diam 3/8", 15m 16x1,5 fitting



Version with Air Electric Generator



Ref.24585 Remote mixing system



Version with heaters kit (only with direct electric power source)

"TECHNOLOGY BECOMES EASY AND PRACTICAL"

Ref.24566 Ghibli Mix 2K Trolley version - Accessories with 50 lt. gravity tanks kit

Display with icons commands for easy use. The software is available in italian, english and french.

Failure alarms and shutdown.

Pot-Life time alarm.

Measuring and electronic control of flow and consumption.

Electronic control of dosage (the control system is not in contact with the product).

Material in contact with the fluid in stainless steel or zinc-coated steel.

Solid design protects against accidental blows.

Air Electric Generator allows the Ghibli Mix 2K to operate with only the pneumatic feed. Equipped with a battery buffer, the turbine works for 1/5 of the total operation time.

Ghibli 40:1 pump stainless steel certified Atex  II 2 G c IIB T6



50-litre gravity tank, equipped with an anti-splash cover. Made from non-stick materials ensuring quick and easy cleaning after use.

The trolley is easy to move and is easy to integrate into the working environment.

Larius heater up to 90°: increases the fluidity of the paint without the use of solvents, reduces the over spray and the drying time, increases the thickness of the protective film and improves the finish.

Technical data

Number of components	2
Mixing ratio	Min. 1:1 Max 30:1 decimals included
*Ratio guarantee	1%
Maximum working pressure	0-250 bar
Maximum air feeding pressure	7 bar
* Voltage	230 V
* Or pneumatic feed	
* Maximum flow of mixed product	Max 3 lt/m
* Depending on paint used, supply pressure, mixing ratio	
** Operating machine temperature	Min.5°CMax. 50°C
* * Temperature regarding the machine, also check the product's technical chart.	
Noise Level	74 dB
Dimensions	1000x1500x1300 mm
Weight	250 Kg

Available versions ratio 40:1

- Ref. 24561 Ghibli 40:1 Mix 2K stainless steel
- Ref. 24560 Ghibli 40:1 Mix 2K stainless steel+ stainless steel flowmeter
- Ref. 24565 Ghibli 40:1 Mix 2K + stainless steel flowmeter + Air electric generator
- Ref. 24566 Ghibli 40:1 Mix 2K + Air electric generator

Fields of application

- General metalworks
- Construction equipment and earth moving machinery
- Construction equipment
- Aerospace industry
- Automobile industry
- Naval construction and maintenance
- Railcars construction and maintenance

Prices on demand

Nova 45:1 Mix 2K

CODE	DESCRIPTION
24500	Nova 45:1 Mix 2K
24510	Nova 45:1 Mix 2K + Air Electric Generator
24505	Nova 45:1 Mix 2K Stainless steel
24515	Nova 45:1 Mix 2K Stainless steel + Air Electric Generator

Nova 68:1 Mix 2K

CODE	DESCRIPTION
24520	Nova 68:1 Mix 2K
24530	Nova 68:1 Mix 2K + Air Electric Generator
24525	Nova 68:1 Mix 2K Stainless steel
24535	Nova 68:1 Mix 2K Stainless steel + Air Electric Generator

Nova 80:1 Mix 2K

CODE	DESCRIPTION
24540	Nova 80:1 Mix 2K
24550	Nova 80:1 Mix 2K + Air Electric Generator
24545	Nova 80:1 Mix 2K Stainless steel
24555	Nova 80:1 Mix 2K Stainless steel + Air Electric Generator

The basic Nova Mix 2K systems are composed of:

- Trolley easy to move and easy to integrate into the working environment
- PLC control with worksite protection and anti-intrusion
- Nova pumps
- Ghibli 30:1 pumps for cleaning
- "FRL" group and pneumatic filters 1"
- Valve and mixing system connected to the PLC
- Exclusive dosage control system (not in contact with the product)

Nova 45:1 - 68:1 - 80:1 Mix 2K Accessories

CODE	DESCRIPTION
24570	Heaters kit complete with fittings and supports
24575	Heaters kit in STAINLESS STEEL complete with stainless steel fittings and supports
24580	50 lt gravity tanks kit
18065	High pressure hose Ø 3/8", with M16X1,5 fitting, 15 m
11130	L91X spray gun with M16X1,5 revolving fitting
11703	LA 95 2K. External mixing
11756	Bicomponent Gun for dense products
18270	Super Fast Clean base
SFC	Super Fast Clean Nozzle
24585	Remote mixing system



Version with Air Electric Generator



Ref.24585 Remote mixing system



Version with heaters kit (only with direct electric power source)

"TECHNOLOGY BECOMES EASY AND PRACTICAL"

Ref. 24515 Nova Mix 2K Trolley version - Accessories with 50 lt. gravity tanks kit

Display with icons commands for easy use. The software is available in italian, english and french.

Failure alarms and shutdown.

Pot-Life time alarm.

Measuring and electronic control of flow and consumption.

Electronic control of dosage (the control system is not in contact with the product).

Material in contact with the fluid in stainless steel or zinc-coated steel.

Solid design protects against accidental blows.

Air Electric Generator allows the Nova Mix 2K to operate with only the pneumatic feed. Equipped with a battery buffer, the turbine works for 1/5 of the total operation time.



Certified stainless steel pump Atex  II 2 G c IIB T6

 **Pneumatic engine anti-freeze**

50-litre gravity tank, equipped with an anti-splash cover. Made from non-stick materials ensuring quick and easy cleaning after use.

Larius heater up to 90°: increases the fluidity of the paint without the use of solvents, reduces the over spray and the drying time, increases the thickness of the protective film and improves the finishing

The trolley is easy to move and is easy to integrate into the working environment.

Technical data

Number of components	2
Mixing ratio	Min 1:1 Max 30:1 decimals included
*Ratio guarantee	1%
Maximum working pressure	0-400 bar
Maximum air feeding pressure	7 bar
*Voltage	230 V
* Or pneumatic feed	
* Maximum flow of mixed product	Max 14 lt/m
* Depending on paint used, supply pressure, mixing ratio	
** Operating machine temperature	Min.5°C Max. 50°C
** Temperature regarding the machine, also check the product's technical chart.	
Noise Level	74 dB
Dimensions	1000x1500x1300 mm
Weight	320 Kg

Available versions ratio 45:1 - 68:1 - 80:1

- Ref.24500 Nova 45:1 Mix 2K
- Ref.24520 68:1 - Ref.24540 80:1
- Ref.24510 Nova 45:1 Mix 2K +Air electric generator
- Ref.24520 68:1 - Ref.24540 80:1
- Ref.24505 Nova 45:1 Mix 2K stainless steel
- Ref.24520 68:1 - Ref.24540 80:1
- Ref.24515 Nova 45:1 Mix 2K stainless steel + Air electric generator
- Ref.24520 68:1 - Ref.24540 80:1

Fields of application

- General metalworks
- Construction equipment and earth moving machinery
- Construction equipment
- Aerospace industry
- Automobile industry
- Naval construction and maintenance
- Railcars construction and maintenance

Q4 GOLD HVLP

CODE	DESCRIPTION
17001	Q4 Gold Professional HVLP turbine system

Low pressure flow with reduced overspray

Accessories

CODE	DESCRIPTION
17002	Q4 Gold HVLP spray gun
17070	Hose for Q4 Gold HVLP spray gun
17031	Cup for Q4 Gold HVLP spray gun
17071	Kit nozzle- air cap- needle mm.0,7 <i>Ideal for water-soluble varnishes, nitre-lacquers, insulation, cellulose, acrylics, synthetics, polyurethanes, bleaches</i>
17072	Kit nozzle- air cap- needle mm.1 <i>Ideal for water-soluble varnishes, nitre-lacquers, insulation, cellulose, acrylics, synthetics, polyurethanes, bleaches</i>
17073	Kit nozzle- air cap- needle mm.1,4 <i>Ideal for bodywork enamels, nitre lacquer, latex, transparent materials, undercoats, oil paints and paint strippers</i>
17074	Kit nozzle- air cap- needle mm.1,8 <i>Ideal for isolants, transparent materials, polyurethanes, oil paints, enamels epoxies, plastics, adhesives, floor coatings, latex etc. Suitable for large surfaces, thicker spreading, stain effects</i>
17076	Kit nozzle- air cap- needle mm.2,2 <i>Ideal for paints and coatings for construction, industrial undercoats, latex (walls and ceilings), micaceous paints, etc. Ensures fast covering with a high paint flow</i>

The equipment is powered by a four-stage, high performance motor that is mounted on a double ball bearing, able to produce a pressure of 6PSI (0.5 bar).

The propulsion of the air is produced by four fans; the motor reduces noise by 50% and all types of paints may be used (the paint spatula can be adjusted from 1/8" to 15").

Q4 Professional HVLP turbine systems works with different nozzle sizes depending on the application to be carried out.

XT spray gun is designed to only let air pass when the trigger is pressed, this means less dust and less paint accumulation on the nozzle. The parts that come into contact with the paint are made of stainless steel and the handle of the XT spray gun is made of nylon to insulate the hand from the heat of the air



CODE	DESCRIPTION										
61000	<p>SANDBLASTER LT. 24</p> <p><i>Components: Sandbox Anti-abrasive hose Ø 16x30 10 metres Lance with nozzle fixing ring nut and fittings Tungsten carbide nozzle Ø 4 Floppy protective cap</i></p> <p>Technical features</p> <table> <tr> <td>Max working pressure</td> <td>7 bar</td> </tr> <tr> <td>Capacity for abrasive</td> <td>lt 24</td> </tr> <tr> <td>Height</td> <td>cm 80</td> </tr> <tr> <td>Diameter</td> <td>cm 50</td> </tr> <tr> <td>Weight (empty)</td> <td>kg 32</td> </tr> </table>	Max working pressure	7 bar	Capacity for abrasive	lt 24	Height	cm 80	Diameter	cm 50	Weight (empty)	kg 32
Max working pressure	7 bar										
Capacity for abrasive	lt 24										
Height	cm 80										
Diameter	cm 50										
Weight (empty)	kg 32										
62000	<p>SANDBLASTER LT.115</p> <p><i>Components: Sandbox Anti-abrasive hose Ø 25x40 10 metres Lance with nozzle fixing ring nut and fittings Tungsten carbide nozzle Ø 6 Air mask type M02 ref. 57004 Mask air hose Ø 8x17, 10 metres with fittings Remote control 10 metres</i></p> <p>Technical features</p> <table> <tr> <td>Max working pressure</td> <td>12 bar</td> </tr> <tr> <td>Capacity for abrasive</td> <td>lt 115</td> </tr> <tr> <td>Height</td> <td>cm 130</td> </tr> <tr> <td>Diameter</td> <td>cm 90</td> </tr> <tr> <td>Peso a vuoto</td> <td>kg 90</td> </tr> </table>	Max working pressure	12 bar	Capacity for abrasive	lt 115	Height	cm 130	Diameter	cm 90	Peso a vuoto	kg 90
Max working pressure	12 bar										
Capacity for abrasive	lt 115										
Height	cm 130										
Diameter	cm 90										
Peso a vuoto	kg 90										
63000	<p>SANDBLASTER LT. 215</p> <p><i>Components: Sandbox Anti-abrasive hose Ø 25x40 20 metres Lance with nozzle fixing ring nut and fittings Tungsten carbide nozzle Ø 7 Air mask type M04 ref. 57005 Mask air hose Ø 8x17, 20 metres with fittings Remote control 20 metres</i></p> <p>Technical features</p> <table> <tr> <td>Max working pressure</td> <td>12 bar</td> </tr> <tr> <td>Capacity for abrasive</td> <td>lt 215</td> </tr> <tr> <td>Height</td> <td>cm 140</td> </tr> <tr> <td>Diameter</td> <td>cm 105</td> </tr> <tr> <td>Weight (empty)</td> <td>kg 120</td> </tr> </table>	Max working pressure	12 bar	Capacity for abrasive	lt 215	Height	cm 140	Diameter	cm 105	Weight (empty)	kg 120
Max working pressure	12 bar										
Capacity for abrasive	lt 215										
Height	cm 140										
Diameter	cm 105										
Weight (empty)	kg 120										



Internal sandblasting devices for hoses Available by order

Internal sandblasting device for hoses from Ø 33 mm to Ø 60 mm (1,¼" to 2")
Internal sandblasting device for hoses from Ø 60 mm to Ø 125 mm (3" to 5")
Internal sandblasting device for hoses from Ø 125 to Ø 300 mm (6" to 12")
Internal sandblasting device for hoses from Ø 300 to Ø 1,100 mm (12" to 43")

Compressor: when choosing the compressor consider approximately 125 litres/min at 6 bar for every Kw of power.

Venturi nozzles (threaded)

Ref.	Diam	Air consumption l/min		Approximate abrasive consumption kg/h		
		6 bar	7 bar	Siliceous sand	Metallic grit	Corundum
56022	8	5000	5400	535	1350	625
56023	10	6200	7000	700	1750	830

Venturi nozzles (nut closure)

Ref.	Diam	Air consumption l/min		Approximate abrasive consumption kg/h		
		6 bar	7 bar	Siliceous sand	Metallic grit	Corundum
56006	3	470	550	55	140	65
56000	4	850	950	95	230	110
56001	5	1500	1800	150	370	175
56002	6	2600	3000	300	700	355
56003	7	4200	4600	470	1050	545
56004	8	4800	5200	500	1200	600
56005	9	5800	6600	590	1350	695
56007	10	6500	7500	670	1550	790

Anti-abrasive hose

CODE	DESCRIPTION
57026	Anti-abrasive hose Ø 25x40 20 m for 115/215 lt
57029	Anti-abrasive hose Ø 16x30 10 m for 24 lt

Protective caps

CODE	DESCRIPTION
57003	Floppy protective cap
57027	Plexiglass spare part
57112	Anti-dust filter
57004	Ventilated cap model M02
57017	Polycarbonate visor for M-02 M-04 caps
57004/2	Filter for ventilated cap
57005	Ventilated cap model M04

Remote controls

CODE	DESCRIPTION
60035	Remote control for sandblasting machine 24/115lt (10m)
60036	Remote control for sandblasting machine 115lt (20m)
60037	Remote control for sandblasting machine 215lt (20m)

“The best solution for your road marking applications”

AIRLESS LINE QUALITY

- High-pressure spraying is the fastest and most productive line painting method
- High-quality line painting throughout the application with sharp and even lines
 - The paint dries quickly and one pass is enough for a well-defined line
 - Perfect lines on the most different surfaces
 - 30% higher productivity and 20% overspray reduction

TESTED TECHNICAL QUALITY

- The LARIUS line strippers combine product performance with operator requirements
- High-quality raw materials assure resistance, functionality and 100% reliability
 - Easy and safe machine starting and control
 - Reduced wear, original spare parts, technical service

DEMONSTRATED OPERATIONAL QUALITY

- LARIUS line strippers provide operational efficiency that increase the result of the application
- Operational flexibility: suitable for indoor and outdoor applications
 - Fast operations control: easy controls centralised in front of the operator
 - Quick colour change: (paint preparation not required)
 - Easy use and service while in operation (the gun can be demounted without tools)
 - Comfortable handling and light vehicle
 - Multi-purposes: can be also used as a normal spraying equipment

MATERIALS

Almost all road marking paints are 100% compatible with water-based products. The LARIUS Airless Line Painters must be used with filtered paint specifically for airless applications.

AIRLESS LINE STRIPERS APPLICATIONS

- Parking lots (schools, hotels, airports, supermarkets, factories, train stations....)
- Mid-road marking, pedestrian crossings, road junctions
- Marking of indoor and outdoor logistic areas
- Sports and play grounds

TABLE FOR NOZZLE SELECTION

Nozzle height from the ground	Spray angle 20°	Line width Spray angle 40°	Spray angle 60°
10 cm	~ 3 cm	~5 cm	~ 10 cm
15 cm		~ 7 cm	~ 13 cm
20 cm	~ 6 cm	~ 8 cm	~ 16 cm
25 cm		~ 10 cm	~ 20 cm
30 cm	~ 10 cm	~ 12 cm	~ 23 cm
35 cm			~ 26 cm

LARIUS ON THE ROAD

With our line strippers you save time & money.



	MIRÒ LINER PLUS MANUAL PUSH	DALÌ LINER PLUS MANUAL PUSH	GIOTTO LINER PLUS SELF-PROPELLED	VIKING LINER MANUAL PUSH SELF-PROPELLED
Motor power by Yamaha	5,5 - HP	5,5 - HP	10 - HP	10 - HP
Max. flow rate	2 - l/m	4 - l/m	7 - l/m	8 - l/m
Max. pressure	210 bar	210 bar	210 bar	210 bar
Airless sprayguns	N°1 AT 250	N°1 AT 250	N°1 AT 250	N°2 AT 250
Bicomponent product spray guns				*
Nozzle sizes provided	1 x 11-40 1 x 13-40 1 x 15-40	1 x 11-40 1 x 13-40 1 x 17-40	1 x 11-40 1 x 13-40 1 x 17-40	2 x 11-40 2 x 13-40 2 x 17-40
50-litre tank	*	*	*	
Colours	1	1	1	2
Automatic line painting				
Accessories	*	*	*	*
Applications	Small-sized line marking jobs and road maintenance	Medium-sized line marking jobs and road maintenance	Medium-sized line marking jobs and road maintenance	Medium-sized line marking jobs and road maintenance
Multi-purpose sprayer	*	*	*	*
Weight	60 kg	65 kg	200 kg	110 kg
Dimensions	1200x700x1000	1650x750x1000	1650x750x1000	1650x750x1000

LARIUS ON THE ROAD

Larius line stripper drives you easily straight ahead.



	EXCALIBUR LINER MANUAL PUSH	ZEUS LINER MANUAL PUSH SELF	DRAGON LINER SELF-PROPELLED	EVEREST TH SELF-PROPELLED	K2 ECO SELF-PROPELLED
Motor power	5,5 - HP	10 - HP	10 - HP	12 - HP	BATTERY
Max. flow rate	2 - l/m	4 - l/m	5 - l/m	6,5 - l/m	2,8 - l/m
Max. pressure	210 bar	210 bar	230 bar	230 bar	230 bar
Airless sprayguns	N°1 AT 250	N°2 AT 250	N°2 AT 250	N°2 LA95 + N°1 AT 250	N°1 AT 250
Bicomponent product spray guns					
Nozzle sizes provided	1 x 11-40 1 x 13-40 1 x 15-40	2 x 13-40 2 x 15-40 2 x 19-40	2 x 13-40 2 x 17-40 2 x 21-40 1 x 19-40	2 x 13-40 2 x 17-40 2 x 21-40 1 x 19-40	1 x 11-40 1 x 13-40 1 x 17-40
50-litre tank	*	*	*	*	*
Colours	1	1	1	1	1
Automatic line painting			*	*	
Accessories	*	*	*	*	*
Applications	Medium-sized line marking jobs and road maintenance	Medium-sized line marking jobs and road maintenance	Large line marking jobs and road maintenance	Large line marking jobs and road maintenance	Medium-sized line marking jobs and road maintenance
Multi-purpose sprayer	*	*	*	*	*
Weight	80 kg	100 kg	220 kg	260 kg	280 kg
Dimensions	1400x600x1050	1650x750x1000	1650x750x1000	2000x800x1100	2000x800x1100

CODE	DESCRIPTION
18381	MIRÒ LINER PLUS Petrol engine - lt. 20 paint can - manual push 1 Filter with pressure gauge 1 High pressure hose Ø 1/4" with M16X1,5 fitting, 10 m 1 Suction system with return 1 AT250 manual airless spray gun 1 Super Fast Clean base 3 Super Fast Clean nozzle (11-40 / 13-40 / 15-40) 1 Tool kit
18380	MIRÒ LINER PLUS Petrol engine - lt. 50 gravity tank - manual push 1 Filter with pressure gauge 1 High pressure hose Ø 1/4" with M16X1,5 fitting, 10 m 1 recirculation hose 1 AT250 manual airless spray gun 1 Super Fast Clean base 3 Super Fast Clean nozzle (11-40 / 13-40 / 15-40) 1 Tool kit
18397	MIRÒ LINER PLUS Petrol engine - lt. 30 double gravity tank - manual push 1 Filter with pressure gauge 1 High pressure hose Ø 1/4" with M16X1,5 fitting, 10 m 1 recirculation hose 1 AT250 manual airless spray gun 1 Super Fast Clean base 3 Super Fast Clean nozzle (11-40 / 13-40 / 15-40) 1 Tool kit

Kit

CODE	DESCRIPTION
18359	Kit Glass beads dispenser for one manual gun
4038	Laser pointer kit
4500	Glass beads dispenser

Accessories

CODE	DESCRIPTION
35015	High pressure hose Ø 1/4" with M16X1,5 fitting, 10 m
11200	AT250 airless gun with M16X1,5 revolving fitting and super fast clean base. Ref. 18270
18270	Super Fast Clean base
SFC	Super Fast Clean nozzle
TSC	Top spray clean nozzle
4840	Gun handling on wheel
18245	Gravity tank lt.50
20802	White Gravity tank lt.30
20802/1	Blue Gravity tank lt.30

Ref. 18381 MIRÒ LINER PLUS

Professional airless line striper. Solid and broken line striper. Ideal for small line marking jobs and maintenance. Use water- or solvent based non-refl ective airless paint.



Trolley structure with ergonomic handgrip allows comfortable, easy and precise machine driving to achieve the best line quality.

Front tiller with pivot wheel and locking..

AT 250 airless spray gun for 3 to 30 cm wide lines, mounted on an adjustable block: changes the spraying range by changing the height of the spraygun or the nozzle.

400 mm Ø tired wheels guarantee stability and ease of movement and cushion unevenness of the road surface.



Technical features	
Motor power by Yamaha	5,5 HP
Max. pressure	210 bar
Max. flow rate	2 l/m
Dimensions	1200x700x1000
Weight	60 kg
Multi-purpose: airless sprayer	

CODE	DESCRIPTION
4081	GIOTTO LINER PLUS Petrol engine - self propelled - lt. 50 gravity tank - 1 spray gun
4084	GIOTTO LINER PLUS Petrol engine - self propelled - lt. 30 double gravity tank - 1 spray gun <i>Complete with:</i> N°1 Filter with pressure gauge N° 1 High pressure hose Ø 1/4" with M16X1,5 fitting, 10 m N°1 recirculation hose N°1 50-litre gravity tank + stop valve and extractable filter N°1 AT250 manual airless spray gun N°1 Super Fast Clean base N° 3 Super Fast Clean nozzle (11-40 / 13-40 / 17-40) N°1 Tool kit
4080	GIOTTO LINER PLUS Petrol engine - self propelled - lt. 50 gravity tank - 1 spray gun
4082	GIOTTO LINER PLUS Petrol engine - self propelled - lt. 30 double gravity tank - 2 spray gun <i>Complete with:</i> N°1 Filter with pressure gauge N° 1 High pressure hose Ø 1/4" with M16X1,5 fitting, 10 m N°1 recirculation hose N°2 AT250 manual airless spray guns N°2 Super Fast Clean bases N° 3 Super Fast Clean nozzle (11-40 / 13-40 / 17-40) N°1 Tool kit

Accessories

CODE	DESCRIPTION
35015	High pressure hose Ø 1/4" with M16X1,5 fitting, 10 m
11200	AT 250 airless gun with M16X1,5 revolving fitting
18270	Super Fast Clean base
SFC	Super Fast Clean nozzle
TSC	Top spray clean nozzle
4840	Gun handling on wheel
18245	Gravity tank lt.50
20802	White Gravity tank lt.30
20802/1	Blue Gravity tank lt.30

Kit

CODE	DESCRIPTION
4038	Laser pointer kit
4506	Working light
26000	Operator footboard
4500	Glass beads dispenser
18359	Glass beads dispenser kit complete with tank (for one gun)
18354	Glass beads dispenser kit complete with tank (for two gun)
4720	Seat kit

Ref. 4081 GIOTTO LINER PLUS

Professional airless liner striper self-propelled. Paints one solid or broken line at a time in one colour. Ideal for medium-sized line painting jobs and maintenance. Use filtered water- or solvent-based non-refl ective paint specifically for airless applications.



Technical features	
Motor power by Yamaha	10 HP
Max. pressure	210 bar
Max. flow rate	7 l/m
Dimensions	1650x750x1000
Weight	200 kg
Multi-purpose: airless sprayer	

CODE	DESCRIPTION
4900	VIKING Petrol engine - lt. 20 double paint can - manual push
4904	VIKING Petrol engine - lt. 30 double gravity tank - manual push <i>Complete with:</i> N°2 filters with pressure gauge N°2 High pressure hose Ø 1/4" with M16X1,5 fitting, 10 m N°2 Suction systems with return N°2 AT250 manual airless spray guns N°2 Super Fast Clean bases N°6 Super Fast Clean nozzles (n° 2 11-40 / n° 2 13-40 / n° 2 17-40) N°1 Tool kit
4920	VIKING Petrol engine - lt. 20 double paint can - self-propelled
4921	VIKING Petrol engine - lt. 30 double gravity tank - self-propelled <i>Complete with:</i> N°2 filters with pressure gauge N°2 High pressure hose Ø 1/4" with M16X1,5 fitting, 10 m N°2 Suction systems with return N°2 AT250 manual airless spray guns N°2 Super Fast Clean bases N°6 Super Fast Clean nozzles (n° 2 11-40 / n° 2 13-40 / n° 2 17-40) N°1 rod with flashing light N°1 Speed control panel N°1 Tool kit
4950	VIKING Petrol engine - lt. 20 double paint can - self-propelled - automatic line sequencer
4951	VIKING Petrol engine - lt. 30 double gravity tank - self-propelled - automatic line sequencer <i>Complete with:</i> N°2 filters with pressure gauge N°1 High pressure hose Ø 1/4" with M16X1,5 fitting, 10 m N°2 Suction systems with return N°1 AT250 manual airless spray gun N°2 LA95 automatic airless spray guns N°3 Super Fast Clean bases N°7 Super Fast Clean nozzles (n° 2 11-40 / n° 2 13-40 / n° 2 17-40 / n° 1 19-40) N°1 rod with flashing light N°1 speed control and line setting panel N°1 Tool kit

Accessories

CODE	DESCRIPTION
4720	Seat kit
4038	Laser pointer kit
4506	Working light
26000	Operator footboard
4500	Glass beads dispenser
4405	Glass beads dispenser kit for liners with 2 spray guns (rif. 4900, rif. 4920)
4405/3	Glass beads dispenser complete kit for 2 automatic guns
35015	High pressure hose Ø 1/4" with M16X1,5 fitting, 10 m
18354	Glass beads dispenser kit complete with tank (for two guns)
11200	AT 250 airless gun with M16X1,5 revolving fitting and super fast clean base
11700	LA95 airless automatic gun
18270	Super Fast Clean base
SFC	Nozzle Super fast clean
TSC	Top spray clean nozzle
4840	Gun handling on wheel
20802	White Gravity tank lt.30
20802/1	Blue Gravity tank lt.30

VIKING LINER 2 COLORS

High-quality line painting throughout application with sharp and even lines – Ease of use and maintenance

Ref. 4920 VIKING 2-COLOUR LINER

Professional airless line striper self propelled. Simultaneously paints two lines in the same colour or in two different colours. The lines can be solid, broken or mixed. Ideal for medium-sized to large line painting jobs and maintenance. Use filtered water- or solvent based non-reflective paint specifically for airless applications.

AT 250
airless spraygun
for 3 to 30 cm wide lines,
mounted on an adjustable block:
changes the spraying range
by changing the height of the
spraygun or the nozzle.

Paint feeding
directly from the can. Easy and fast can change for two
colours of the same or different shade.
Individual tank capacity 30 litres

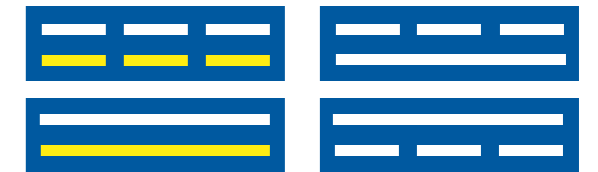
Speed Liner Control
Simple, functional
and self-locking



Trolley structure with ergonomic handgrip
allows comfortable, easy and precise machine driving to achieve the best line quality.

400 mm Ø tired wheels
guarantee stability and ease of movement and cushion unevenness of the road surface.

Front wheel
with swivel wheel and lock.



Technical features	
Motor power by Yamaha	10 HP
Max. pressure	210 bar
Max. flow rate	8 l/m
Dimensions	1650x750x1000
Weight	130 kg
Multi-purpose: airless sprayer	

CODE	DESCRIPTION
4960	VIKING LINER bicomponent 2K 1:1 Petrol engine - lt. 30 double gravity tank + self propelled + Automatic line sequencer

Accessories

CODE	DESCRIPTION
11703	LA95 2K . External mixing
4038	Laser pointer kit
4506	Working light
26000	Operator footboard
4405/3	Glass beads dispenser complete kit for 2 automatic guns
4840	Gun handling on wheel

REF 4960 VIKING LINER 2 K, FOR PRODUCT WITH CHANGELESS VISCOSITY , RATIO 1:1

Professional airless road-marking equipment, for 2K products in ratio 1:1, self-propelled and with automatic line sequencer. This equipment makes a single stripe, with or without interruption. It's done for middle-big size marking works. It works with particular 2K airless paint.

Technical features	
Motor power by Yamaha	12,75 HP
Max. pressure	210 bar
Max. flow rate	8 l/m
Dimensions	1650x750x1000
Weight	130 kg
Multi-purpose: airless sprayer	

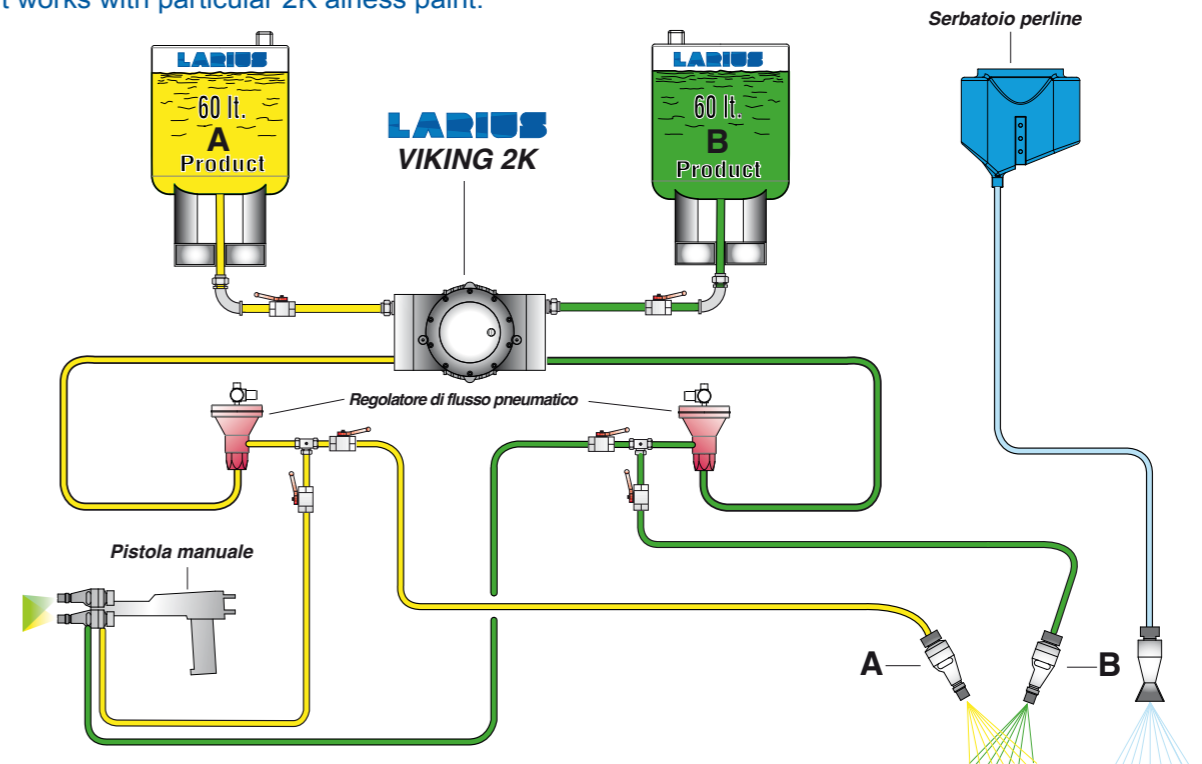


LA95 2K . External mixing



REF. 4960 VIKING LINER 2 K, FOR PRODUCT WITH CHANGELESS VISCOSITY, RATIO 1:1 EXTERNAL MIXING

Professional airless road-marking equipment, for 2K products in ratio 1:1, self-propelled and with automatic line sequencer. This equipment makes a single stripe, with or without interruption. It's done for middle-big size marking works. It works with particular 2K airless paint.



CODE	DESCRIPTION
4861	Excalibur liner Petrol engine - lt. 20 tank - manual push N°1 Line filter N°1 Complete pressure gauge N°1 High pressure hose Ø 1/4" with M16X1,5 fitting, 10 m N°1 Suction system with return N°1 AT250 manual airless spray gun N°1 Super Fast Clean base N° 3 Super Fast Clean nozzle (11-40 / 13-40 / 15-40) N°1 Tool kit
4860	Excalibur liner Petrol engine - lt. 50 tank - manual push N°1 Line filter N°1 Fitting with pressure gauge N°1 High pressure hose Ø 1/4" with M16X1,5 fitting, 10 m N°1 AT250 Airless spray gun N°1 Super Fast Clean base N° 3 Super Fast Clean nozzle (11-40 / 13-40 / 15-40) N°1 Tool kit
4842	Excalibur liner Petrol engine - lt. 30 double gravity tank - manual push N°1 Line filter N°1 Fitting with pressure gauge N°1 High pressure hose Ø 1/4" with M16X1,5 fitting, 10 m N°1 AT250 Airless spray gun N°1 Super Fast Clean base N° 3 Super Fast Clean nozzle (11-40 / 13-40 / 15-40) N°1 Tool kit

Kit

CODE	DESCRIPTION
18359	Glass beads dispenser kit complete with tank (for one gun)
4038	Laser pointer kit
4500	Glass beads dispenser

*on request available glass beads dispenser under pressure

Accessories

CODE	DESCRIPTION
35015	High pressure hose Ø 1/4" with M16X1,5 fitting, 10 m
11200	AT250 airless gun with M16X1,5 revolving fitting and super fast clean base. Ref. 18270
18270	Super Fast Clean base
SFC	Super Fast Clean nozzle
TSC	Top spray clean nozzle
4840	Gun handling on wheel
18245	Gravity tank lt.50
20802	White Gravity tank lt.30
20802/1	Blue Gravity tank lt.30

Ref.4860 EXCALIBUR LINER

Professional airless line striper that paints a single solid or broken line. Ideal for small line marking jobs and maintenance. Use water- or solvent-based non-reflective airless paint.



Adjustable handgrip.
Maximum user comfort.

400 mm Ø pneumatic wheels
guarantee stability and ease
of movement and cushion
unevenness of the road's
surface.

EXCALIBUR piston pump.
Suctions the most dense paints
without need for dilution

50-litre tank
Equipped with an anti-splash
cover. Funnel-shaped and made
of non-stick material for easy
cleaning when the job is done

AT250 Airless spray gun
for 3 to 30 cm wide lines, mounted on an
adjustable block: changes the spraying
range by changing the height of the
spray gun or nozzle.



Technical features

Motor power by Yamaha	5,5 HP
Max. pressure	210 bar
Max. flow rate	2 l/m
Dimensions	1400x600x1050
Weight	80 kg

**Multi-purpose:
airless sprayer**

CODE	DESCRIPTION
4561	Zeus liner Petrol engine - lt. 20 paint can - manual push N°1 Line filter N°1 Complete pressure gauge N°1 High pressure hose Ø 1/4" with M16X1,5 fitting, 10 m N°1 Suction system with return N°1 AT250 manual airless spray gun N°1 Super Fast Clean base N°6 Super Fast Clean nozzles (n° 2 13-40 / n° 2 15-40 / n° 2 19-40) N°1 Tool kit
4560	Zeus liner Petrol engine - lt. 50 gravity tank - manual push N°1 Line filter N°1 Fitting with pressure gauge N°1 High pressure hose Ø 1/4" with M16X1,5 fitting, 10 m N°1 AT250 Airless spray gun N°1 Super Fast Clean base N°6 Super Fast Clean nozzles (n° 2 13-40 / n° 2 15-40 / n° 2 19-40) N°1 Tool kit
4563	Zeus liner Petrol engine - lt. 30 double gravity tank - manual push N°1 Line filter N°1 Fitting with pressure gauge N°1 High pressure hose Ø 1/4" with M16X1,5 fitting, 10 m N°1 AT250 Airless spray gun N°1 Super Fast Clean base N°6 Super Fast Clean nozzles (n° 2 13-40 / n° 2 15-40 / n° 2 19-40) N°1 Tool kit
4571	Zeus liner Petrol engine - lt. 20 paint can - Self-propelled N°1 Line filter N°1 Complete pressure gauge N°1 High pressure hose Ø 1/4" with M16X1,5 fitting, 10 m N°1 Suction system with return N°1 AT250 manual airless spray gun N°1 Super Fast Clean base N°6 Super Fast Clean nozzles (n° 2 13-40 / n° 2 15-40 / n° 2 19-40) N°1 Tool kit N°1 Rod with flashing light N°1 Speed control panel
4570	Zeus liner Petrol engine - lt. 50 gravity tank - Self-propelled N°1 Line filter N°1 Fitting with pressure gauge N°1 High pressure hose Ø 1/4" with M16X1,5 fitting, 10 m N°1 AT250 Airless spray gun N°1 Super Fast Clean base N°6 Super Fast Clean nozzles (n° 2 13-40 / n° 2 15-40 / n° 2 19-40) N°1 Tool kit N°1 Rod with flashing light N°1 Speed control panel
4573	Zeus liner PPetrol engine - lt. 30 double gravity tank - Self-propelled N°1 Line filter N°1 Fitting with pressure gauge N°1 High pressure hose Ø 1/4" with M16X1,5 fitting, 10 m N°1 AT250 Airless spray gun N°1 Super Fast Clean base N°6 Super Fast Clean nozzles (n° 2 13-40 / n° 2 15-40 / n° 2 19-40) N°1 Tool kit N°1 Rod with flashing light N°1 Speed control panel

Accessories & Kit

CODE	DESCRIPTION
18359	Glass beads dispenser kit complete with tank (for one gun)
4038	Laser pointer kit
4500	Glass beads dispenser
35015	High pressure hose Ø 1/4" with M16X1,5 fitting, 10 m
11200	AT250 airless gun with M16X1,5 revolving fitting and super fast clean base. Ref. 18270
18270	Super Fast Clean base
SFC	Super Fast Clean nozzle
TSC	Top spray clean nozzle
4840	Gun handling on wheel
18245	Gravity tank lt.50
20802	White Gravity tank lt.30
20802/1	Blue Gravity tank lt.30

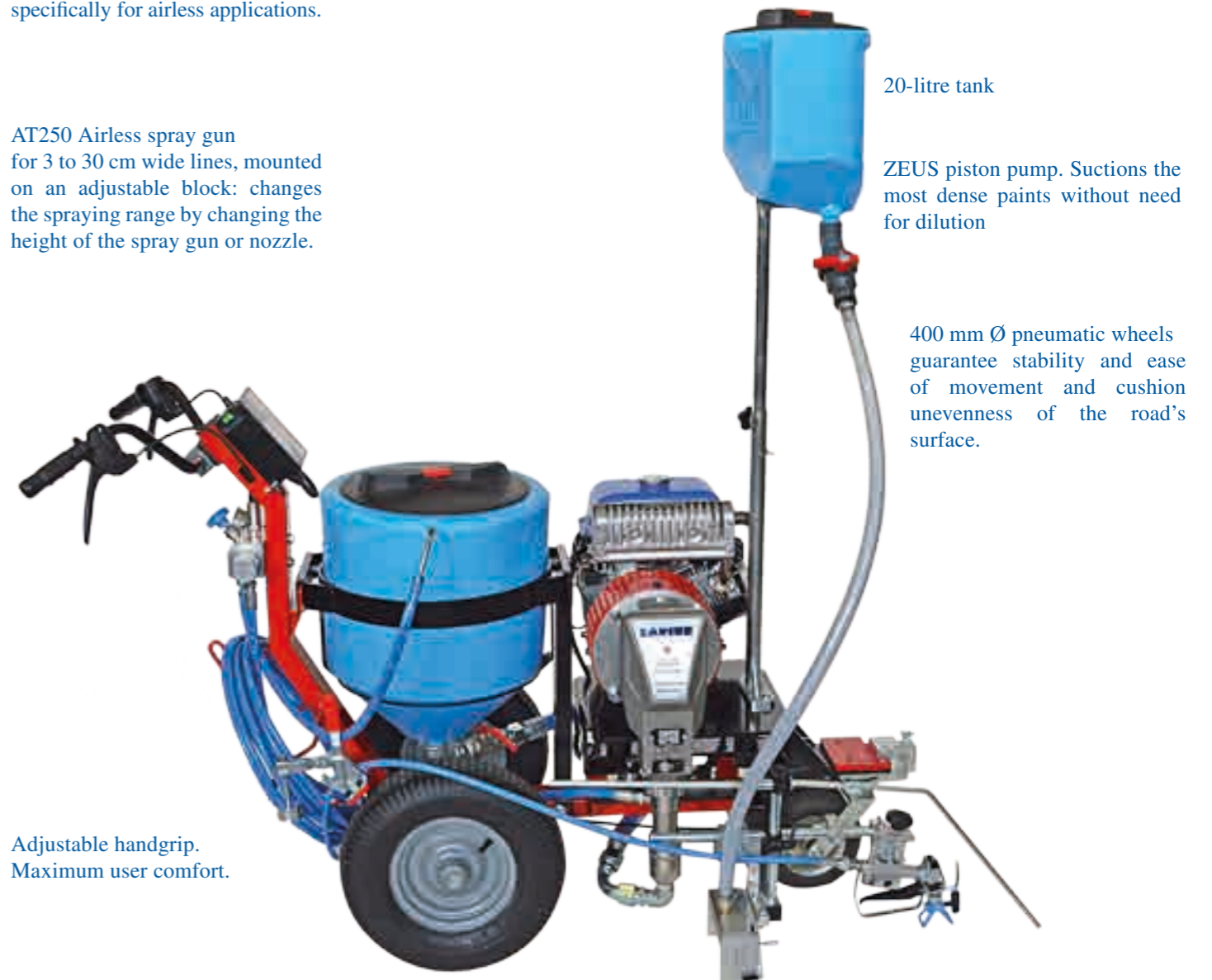
ZEUS LINER MANUAL PUSH - SELF-PROPELLED

High-quality line painting throughout application with sharp and even lines – Ease of use and maintenance

Ref. 4561 ZEUS LINER

Professional airless line striper self-propelled. Simultaneously paints two lines in the same colour. The lines can be solid, broken or mixed. Ideal for medium-sized to large line painting jobs and maintenance. Use filtered water- or solvent-based non-reflective paint specifically for airless applications.

AT250 Airless spray gun for 3 to 30 cm wide lines, mounted on an adjustable block: changes the spraying range by changing the height of the spray gun or nozzle.



20-litre tank

ZEUS piston pump. Suctions the most dense paints without need for dilution

400 mm Ø pneumatic wheels guarantee stability and ease of movement and cushion unevenness of the road's surface.

Adjustable handgrip. Maximum user comfort.



Technical features

Motor power by Yamaha	10 HP
Max. pressure	210 bar
Max. flow rate	3,5 l/m
Dimensions	1650x750x1000
Weight	100 kg

**Multi-purpose:
airless sprayer**

CODE	DESCRIPTION
4600	DRAGON Petrol engine - lt. 50 gravity tank - self-propelled
4615	DRAGON Petrol engine - lt. 30 double gravity tank - self-propelled <i>N°1 Filter with pressure gauge</i> <i>N°1 High pressure hose Ø 1/4" with M16X1,5 fitting, 15 m</i> <i>N°1 Piston stroke compensator</i> <i>N°1 recirculation hose</i> <i>N°2 AT250 manual airless spray guns</i> <i>N°2 Super Fast Clean bases</i> <i>N°6 Super Fast Clean nozzles (n°2 13-40 / n°2 17-40 / n°2 21-40)</i> <i>N°1 rod with flashing light</i> <i>N°1 Speed control panel</i> <i>N°1 Tool kit</i>
4650	DRAGON Petrol engine - lt. 50 gravity tank - self-propelled - automatic line sequencer
4655	DRAGON Petrol engine - lt. 30 double gravity tank - self-propelled - automatic line sequencer <i>N°1 Filter with pressure gauge</i> <i>N°1 High pressure hose Ø 1/4" with M16X1,5 fitting, 15 m</i> <i>N°1 piston stroke compensator</i> <i>N°1 recirculation hose</i> <i>N°1 AT250 manual airless spray gun</i> <i>N°2 LA95 automatic airless spray guns</i> <i>N°3 Super Fast Clean bases</i> <i>N°7 Super Fast Clean nozzles (n°2 13-40 / n°2 17-40 / n°2 21-40 / n°1 19-40)</i> <i>N°1 rod with flashing light</i> <i>N°1 speed control and line setting panel</i> <i>N°1 Tool kit</i>

Accessories

CODE	DESCRIPTION
18026	High pressure hose Ø 1/4" with M16X1,5 fitting, 15 m
11200	AT250 airless gun with M16X1,5 revolving fitting and super fast clean base. Ref. 18270
11700	LA95 airless automatic gun
18270	Super Fast Clean base
SFC	Super Fast Clean nozzle
TSC	Top spray clean nozzle
4840	Gun handling on wheel
18245	Gravity tank lt.50
20802	White Gravity tank lt.30
20802/1	Blue Gravity tank lt.30

Kit

CODE	DESCRIPTION
4720	Seat kit
4038	Laser pointer kit
4506	Working light
26000	Operator footboard
4500	Glass beads dispenser
4405	Glass beads dispenser kit for liners with 2 spray guns (Ref. 4600)
4405/3	Glass beads dispenser complete kit for 2 automatic guns (rif. 4650)
4041	Kit with gravity tank 100lt

DRAGON LINER SELF-PROPELLED

High-quality line painting throughout application with sharp and even lines – Ease of use and maintenance

Ref. 4600 DRAGON LINER SELF-PROPELLED

Professional airless line striper self-propelled. Simultaneously paints two lines in the same colour. The lines can be solid, broken or mixed. Ideal for medium-sized to large line painting jobs and maintenance. Use filtered water- or solvent-based non-reflective paint specifically for airless applications.

Head Liner Control
easy and functional with:
automatic line sequencer,
electronic speed control

50-litre tank
Equipped with an anti-splash cover.
Funnel-shaped and made of non-stick
material for easy cleaning when the
job is done

LA95 airless spraygun
for 3 to 30 cm wide lines,
mounted on an adjustable
block: changes the spraying
range by changing the height
of the spraygun or the nozzle.

AT 250
airless
spraygun

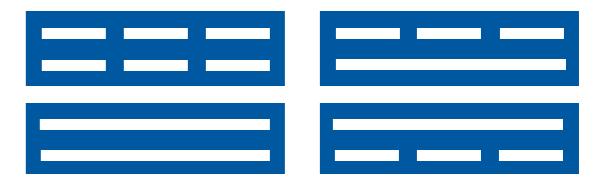
Trolley
structure with
ergonomic
handgrip
allows comfortable,
easy and precise
machine driving to
achieve the best line
quality.



Front tiller
with pivot wheel and locking.

Pneumatic drive carriage
guarantees that the distance between the spraygun and the
surface to be painted is always constant

400 mm Ø tired wheels
guarantee stability and ease of movement and cushion
unevenness of the road surface.



Technical features

Motor power by Yamaha	10 HP
Max. pressure	230 bar
Max. flow rate	4,5 l/m
Dimensions	1650x750x1000
Weight	220 kg

Multi-purpose:
airless sprayer

CODE	DESCRIPTION
4000	EVEREST TH Petrol engine - lt. 50 gravity tank - self propelled - automatic line sequencer
4055	EVEREST TH Petrol engine - lt. 30 double gravity tank - self propelled - automatic line sequencer <i>N°1 Filter with pressure gauge</i> <i>N°1 High pressure hose Ø 1/4" with M16X1,5 fitting, 15 m</i> <i>N°1 Piston stroke compensator</i> <i>N°1 recirculation hose</i> <i>N°1 AT250 manual airless spray gun</i> <i>N°2 LA95 automatic airless spray guns</i> <i>N°3 Super Fast Clean bases</i> <i>N°7 Super Fast Clean nozzles (n°2 13-40 / n°2 17-40 / n°2 21-40/ n°1 19-40)</i> <i>N°1 rod with flashing light</i> <i>N°1 speed control and line setting panel</i> <i>N°1 Automatic glass beads dispenser complete kit for 2 guns</i> <i>N°1 Laser pointer kit</i> <i>N°1 Working light</i> <i>N°1 Operator footboard</i> <i>N°1 Tool kit</i>

Kit

CODE	DESCRIPTION
4720	Seat kit for Everest Th
4405/3	Glass beads dispenser complete kit for 2 automatic guns
4660	Pneumatic glass beads dispenser (spare part for code 4405/3)

*on request available glass beads dispenser under pressure

Accessories

CODE	DESCRIPTION
18026	High pressure hose Ø 1/4" with M16X1,5 fitting, 15 m
11200	AT 250 airless gun with M16X1,5 revolving fitting and super fast clean base
11700	LA95 airless automatic gun
18270	Super Fast Clean base
SFC	Super Fast Clean nozzle
TSC	Top spray clean nozzle
4041	Kit with gravity tank 100lt
4840	Gun handling on wheel
18245	Gravity tank lt.50
20802	White Gravity tank lt.30
20802/1	Blue Gravity tank lt.30

EVEREST TH LINER SELF-PROPELLED

High-quality line painting throughout application with sharp and even lines – Ease of use and maintenance

Ref. 4000 EVEREST TH SELF-PROPELLED LINER

Professional airless line strippers self propelled with automatic line sequencer. Simultaneously paints two lines in one colour. The lines can be solid, broken or mixed. Ideal for large line painting jobs and maintenance. Use filtered water- or solvent-based non-reflective paint specifically for airless applications.

AT 250

LA95

for 3 to 30 cm wide lines, mounted on an adjustable block: changes the spraying range by varying the height of the spray gun or nozzle.

Head Liner Control

easy and functional with: automatic line sequencer, electronic speed control and intrinsic safety devices



Pneumatic wheels
Ø 400 mm
guarantee stability and ease of movement and cushion the unevenness of the road's surface.



Technical features	
Motor power by Yamaha	12 HP
Max. pressure	230 bar
Max. flow rate	6,5 l/m
Dimensions	2000x800x1100
Weight	260 kg
Multi-purpose: airless sprayer	



CODE	DESCRIPTION
4200	<p>K2 SELF-PROPELLED Rechargeable battery engine - lt. 50 gravity tank - self propelled</p> <p>1 Filter with pressure gauge 1 High pressure hose Ø 3/16" with M16X1,5 fitting, 10 m 1 recirculation hose 1 AT250 manual airless spray gun 1 Super Fast Clean base 3 Super Fast Clean nozzle (11-40 / 13-40 / 17-40) 1 rod with flashing light 1 Battery charger 1 Speed and battery control panel 1 Tool kit * available with automatic line sequencer</p>
4210	<p>K2 SELF-PROPELLED Rechargeable battery engine - lt. 30 double gravity tank - self propelled</p> <p>1 Filter with pressure gauge 1 High pressure hose Ø 3/16" with M16X1,5 fitting, 10 m 1 recirculation hose 1 AT250 manual airless spray gun 1 Super Fast Clean base 3 Super Fast Clean nozzle (11-40 / 13-40 / 17-40) 1 rod with flashing light 1 Battery charger 1 Speed and battery control panel 1 Tool kit * available with automatic line sequencer</p>

WARNING

The K2 batteries must be re-charged at least once per month, even if the line striper is not used.

Accessories

CODE	DESCRIPTION
18359	Glass beads dispenser kit complete with tank (for one gun)
18026	High pressure hose Ø 1/4" with M16X1,5 fitting, 15 m
11200	AT 250 airless gun with M16X1,5 revolving fitting
11700	LA95 airless automatic gun
18270	Super Fast Clean base
SFC	Super Fast Clean nozzle
TSC	Top spray clean nozzle
4605	K2 battery charger
4038	Laser pointer kit
4500	Glass beads dispenser
4840	Gun handling on wheel
18245	Gravity tank lt.50
20802	White Gravity tank lt.30
20802/1	Blue Gravity tank lt.30

On request it's available version with automatic line sequencer.

Ref. 4200 K2 ECO LINER

Battery-powered professional ecological airless line striper self-propelled. Paints a solid or broken line in one colour. Ideal for medium-sized indoor or outdoor line painting jobs and maintenance. Use filtered water- or solvent-based non-reflective paint specifically for airless applications.

50-litre tank
Fitted with anti-splash cover .
Funnel-shaped in non-stick material for easy cleaning when the job is done

Speed Liner Control
Simple, functional and self-locking

AT 250
airless spray gun
for 3 to 30 cm wide lines,
mounted on an adjustable block:
changes the spraying range
by changing the height of the
spraygun or the nozzle.

Trolley
structure with
ergonomic
handgrip
allows comfortable, easy and
precise machine driving to
achieve the best line quality.



Front tiller
with pivot wheel and locking.

400 mm Ø pneumatic wheels
guarantee stability and ease of movement and cushion
unevenness of the road surface.



Technical features	
Battery powered	
Max. pressure	230 bar
Max. flow rate	2,8 l/m
Dimensions	2000x800x1100
Weight	280 kg
Multi-purpose: airless sprayer	



Ref. 11200
AT250 airless spray gun with M16X1.5 revolving fitting
Max.work pressure 250 bar



Ref. 11700
LA95 airless automatic spray gun.
High pressure



Ref. 11703
LA95 2K.
External mixing



Ref. SFC
Super fast clean nozzles size from 11-20 to 51-80



Ref. TSC
Top spray clean nozzles from 7-20 to 31-60



Ref. 18270
Super fast clean and Top spray clean base



Ref. 18026
Antipulsation hose Ø1/4" with M16X1.5 revolving fitting 15 m
Ref. 18349
Antipulsation hose Ø3/8" mt.10



Ref. 18359
Kit glass beads dispenser complete - 1 manual gun -



Ref. 18354
Kit glass beads dispenser complete - 2 manual gun -



Ref. 4405/3
Kit glass beads dispenser complete - 2 automatic guns -



Ref. 26000
Operator footboard



Ref. 4720
Seat kit



Ref. 18241
Gravity tank 1t.50

Ref. 20802 - Ref. 20802/1
lt. 30 double gravity tank

Road marking signs

CODE	DESCRIPTION
SIGN 1	Priority sign
SIGN 10	Cycling sign 100x175
SIGN 11	Load – unload sign 70x70
SIGN 12	Pedestrian crossing sign
SIGN 13	Little letter sign h =30 cm
SIGN 14	Little number sign h=30 cm
SIGN 15	Aluminium rod supportsign m 3
SIGN 18	Aluminium rod support m 3.5
SIGN 16	Aluminium rod support sign m 4
SIGN 17	Arrow sign right-left
SIGN 19	Couple spacers sign from 0 to 50 cm
SIGN 2	Arrow way sign to return (2 pz)
SIGN 20	Pedestrian sign 400 x 50 cm
SIGN 21	Pedestrian sign 300 x 50 cm
SIGN 22	Stop sign h=160 cm
SIGN 23	Bus stop sign h=160 cm
SIGN 24	Bike sign 150x200 cm
SIGN 26	Motorcycle sign 100 x 200 cm
SIGN 28	School crossing sign 150 x 85 cm
SIGN 29	Taxi sign h=160 cm
SIGN 3	Top arrow sign right -left
SIGN 4	Arrow sign
SIGN 5	Arrow stick sign urban – extra urban
SIGN 6	Triangle priority sign 1 panel with two triangle h.50X60
SIGN 7	Triangle priority sign 1 panel 90x85 with 1 triangle h.70X60
SIGN 8/A	Letter a sign
SIGN 8/B	Letter b sign
SIGN 8/C	Letter c sign
SIGN 8/I	Letter i sign
SIGN 8/O	Letter o sign
SIGN 8/P	Letter p sign
SIGN 8/S	Letter s sign
SIGN 8/T	Letter t sign
SIGN 8/U	Letter u sign
SIGN 8/X	Letter x sign
SIGN 9	Wheelchair disable sign



AIRLESS TELESCOPIC PAINT ROLLER FROM 90 CM TO 195 CM

CODE	DESCRIPTION
16780	Airless telescopic paint roller <i>Complete with:</i> 1 cover with extra long fibre 1 cover with long fibre 1 cover with medium fibre "2-metre flexible hose 3/16" M16X1,5

COVER

CODE	DESCRIPTION
16988	Cover with extra long fibre
16999	Cover with long fibre
16997	Cover with medium fibre

PLA AIRLESS SPRAY GUN

Complete with Super fast clean base ref. 18270.
Max working pressure 250 bar

CODE	DESCRIPTION
K11421	PLA airless spray gun with M16X1,5 revolving fitting cm 130
K11420	PLA airless spray gun with 1/4" revolving fitting cm 130
K11426	PLA airless spray gun with M16X1,5 revolving fitting cm 180
K11425	PLA airless spray gun with 1/4" revolving fitting cm 180
K11431	PLA airless spray gun with M16X1,5 revolving fitting cm 240
K11430	PLA airless spray gun with 1/4" revolving fitting cm 240

PLA AIRLESS SPRAY GUN Max. working pressure 450 bar

CODE	DESCRIPTION
K11435	PLA airless spray gun with M16X1,5 revolving fitting cm 130
K11436	PLA airless spray gun with 1/4" revolving fitting cm 130
K11440	PLA airless spray gun with M16X1,5 revolving fitting cm 180
K11441	PLA airless spray gun with 1/4" revolving fitting cm 180
K11445	PLA airless spray gun with M16X1,5 revolving fitting cm 240
K11446	PLA airless spray gun with 1/4" revolving fitting cm 240

KIT

CODE	DESCRIPTION
40225	Gaskets kit for PLA airless spray gun
40220	PLA repair kit

KIT

CODE	DESCRIPTION
90050	Gaskets kit for PLA airless spray gun
270	PLA repair kit
271	Filters kit pre-nozzle

Mini Liner

CODE	DESCRIPTION
4100	Mini Liner



LA95 2K . External mixing

CODE	DESCRIPTION
11703	LA95 2K . External mixing



Ref. 11703

Bicomponent gun for dense products

CODE	DESCRIPTION
18756	Bicomponent gun for dense products



Ref. 18756

PROFESSIONAL MIST-LESS MANUAL SPRAY GUNS

Certificate Atex  II 2 G c IIB T6

MIST-LESS MANUAL GUN L400

Max operating pressure 180 bar. Nozzle not included

CODE	DESCRIPTION
21800	Mist-less manual gun L400 for Mist-Less nozzle
21801	Mist-less manual gun L400 complete with Mist-clean base 2 for Super Fast Clean nozzle or Top Spraying Clean nozzle
21802	Mist-less manual gun L400 with long filter for Mist-Less nozzle
21803	Mist-less manual gun L400 complete with long filter and Mist-clean base 2 for Super Fast Clean nozzle or Top Spraying Clean nozzle

*The mist-less gun has a spring that allows you to operate with a maximum working pressure of 110 bar. In order to operate with maximum working pressure 180 bar, you have to mount the "reinforced" spring included into the tool box.

Kit

CODE	DESCRIPTION
21910	Mounting sleeve SFC complete nozzle
21915	Mounting sleeve SFC complete nozzle + Mist-clean base 2
21920	Mounting sleeve Mist-less fixed complete nozzle
21930	Mounting sleeve SFC complete nozzle + Needle
21935	Mounting sleeve Mist-less fixed complete nozzle + Needle
21940	Gaskets kit manual Mist-less gun L400



Rif. 21800



Rif. 21802



Rif. 21801

ULTRA-FLEXIBLE HIGH PRESSURE DOUBLE HOSES

CODE	DESCRIPTION
14060	Ultra flexible high pressure double hose, 5m
14061	Ultra flexible high pressure double hose, 7,5 m
14062	Ultra flexible high pressure double hose, 10 m
14063	Ultra flexible high pressure double hose, 15 m

MIST-LESS NOZZLES

CODE	SIZE	CODE	SIZE	CODE	SIZE
21951	7-20	21961	13-20	21973	21-40
21952	7-40	21962	13-40	21974	21-60
21953	7-65	21963	13-60	21975	25-25
21954	9-20	21965	15-25	21976	25-40
21955	9-40	21966	15-40	21977	25-65
21956	9-65	21967	15-60	21978	31-40
21957	9-80	21969	17-25	21979	31-65
21958	11-25	21970	17-40		
21959	11-40	21971	17-65		
21960	11-60	21972	21-25		



SUPER FAST CLEAN NOZZLES

Size from 11-20 to 39-40

Size - Flow Rate l/m200 bar	Size - Flow Rate l/m200 bar	Size - Flow Rate l/m200 bar	Size - Flow Rate l/m200 bar
SFC 11-20 * 0,55	SFC 19-20 * 1,77	SFC 25-20 * 2,90	SFC 31-40 * 4,83
SFC 11-40 * 0,55	SFC 19-40 * 1,77	SFC 25-40 * 2,90	SFC 31-60 * 4,83
SFC 13-20 * 0,80	SFC 19-60 * 1,77	SFC 25-60 * 2,90	SFC 31-80 * 4,83
SFC 13-40 * 0,80	SFC 21-20 * 2,15	SFC 27-20 * 3,50	SFC 33-40 * 5,50
SFC 13-60 * 0,80	SFC 21-40 * 2,15	SFC 27-40 * 3,50	SFC 33-60 * 5,50
SFC 15-20 * 1,10	SFC 21-60 * 2,15	SFC 27-60 * 3,50	SFC 33-80 * 5,50
SFC 15-40 * 1,10	SFC 23-20 * 2,57	SFC 27-80 * 3,50	SFC 35-40 * 6,00
SFC 15-60 * 1,10	SFC 23-40 * 2,57	SFC 29-20 * 4,30	SFC 37-40 * 6,70
SFC 17-20 * 1,41	SFC 23-60 * 2,57	SFC 29-40 * 4,30	SFC 39-40 * 7,10
SFC 17-40 * 1,41		SFC 29-60 * 4,30	
SFC 17-60 * 1,41		SFC 29-80 * 4,30	



TOP SPRAYING CLEAN NOZZLES

Size	Size	Size
TSC 7-20	TSC 15-40	TSC 21-60
TSC 7-40	TSC 15-60	TSC 23-20
TSC 9-20	TSC 17-20	TSC 23-40
TSC 9-40	TSC 17-40	TSC 23-60
TSC 11-20	TSC 17-60	TSC 27-20
TSC 11-40	TSC 19-20	TSC 27-40
TSC 13-20	TSC 19-40	TSC 27-60
TSC 13-40	TSC 19-60	TSC 31-40
TSC 13-60	TSC 21-20	
TSC 15-20	TSC 21-40	



MIST-CLEAN BASE 2

CODE	DESCRIPTION
21900	Mist-clean base 2



LOW PRESSURE SEMI-PROFESSIONAL MANUAL Paint spray guns LX-G / LX-P

LX-G paint spray gun Low pressure with gravity cup

CODE	DESCRIPTION
14315	LX-G paint spray gun with nozzle 1.4 mm Low pressure
14316	LX-G paint spray gun with nozzle 1.7 mm Low pressure
14317	LX-G paint spray gun with nozzle 2.0 mm Low pressure



LX-P paint spray gun Low pressure with suction cup

CODE	DESCRIPTION
14320	LX-P paint spray gun nozzle 1.3 mm Low pressure
14321	LX-P paint spray gun nozzle 1.8 mm Low pressure



LX-T Hopper paint spray gun Low pressure

CODE	DESCRIPTION
14310	LX-T Hopper paint spray gun Low pressure Includes three nozzles: 4 mm (Ref.14401) 6 mm (Ref.14402) 8 mm (Ref.14403)



Pressure Tex paint spray gun Low pressure

CODE	DESCRIPTION
14400	Pressure Tex paint spray gun Low pressure Includes three nozzles: 4 mm (Ref.14401) 6 mm (Ref.14402) 8 mm (Ref.14403)



LA95 - Automatic spray guns
High and low pressure

Airless LA95 Automatic spray gun - High pressure

Atex certified II 2G
Suitable for painting and sealing

CODE	DESCRIPTION
11700	*LA95 Automatic airless spray gun - High pressure
11750	*LA95 Automatic airless spray gun - High pressure stainless steel

*The nozzle is not included with the spray gun.
Super fast-clean, and standard nozzles can be mounted.
Specify the size when ordering.

Kit

CODE	DESCRIPTION
40080	Repair kit for LA95 Automatic airless spray gun - High pressure



SUPER FAST CLEAN NOZZLE

TOP SPRAYING CLEAN AND STANDARD NOZZLES

CHOOSING A NOZZLE

When choosing a paint nozzle, it is important to consider both the size of the surface to be covered and the amount of product to be deposited. The amount of product deposited is reduced when the nozzle orifice remains the same, but the spraying angle increases. Similarly, if the spraying angle is reduced, the amount of product deposited increases.

Always make sure that the product selected for use is suitable for airless applications.

PROBLEM	SOLUTION
The nozzle jams repeatedly?	- Use a thinner filter - Use a larger nozzle.
Too much product?	- Reduce the size of the orifice. - Increase the spray range.
Too little product?	- Increase the size of the orifice. - Reduce the spray range

NOZZLE WEAR

WEAR

The pressure and abrasiveness of the paint are two variables that accelerate nozzle wear. Paint that is under pressure consumes the orifice of the professional nozzle.

- The orifice becomes larger
- The fan warps and becomes smaller

EFFECTS OF WEAR

- Product is wasted because of increased paint emission
- Increase in cost of work because more coats are necessary

SUGGESTED RECOMMENDATION

Regularly change the nozzle when the starting size of the fan is reduced by 20-25%

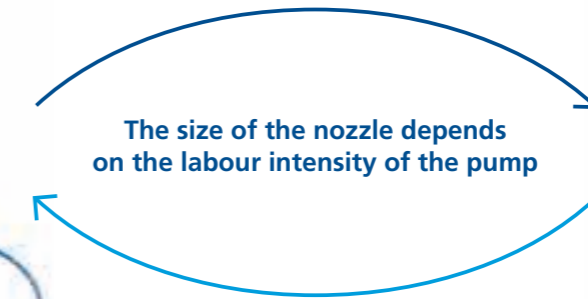
Size of new nozzle fan	Size of worn nozzle fan
5 cm	4 cm
10 cm	8 cm
15 cm	12 cm
20 cm	15 cm
25 cm	20 cm
30 cm	24 cm
35 cm	28 cm
40 cm	32 cm
45 cm	36 cm

SUPER FAST CLEAN NOZZLE

TOP SPRAYING CLEAN AND STANDARD NOZZLES



The pump determines:
Flow rate
Pressure



The nozzle determines:
Spray angle
Spray volume

"WHERE THE EYE DOESN'T REACH, THE SOLUTION MUST BE CUSTOMISED"

It is important to properly pair the professional nozzle with the kind of job to be carried out in order to optimize the finishing quality of the speed of application. The right choice means:

- Saving time and product material
- Less frequent substitutions
- Reduced work load, fewer coats, less overspray
- Improves finishing quality and increases productivity

The nozzle is identified by the raised numbers printed on it for easy reading even when paint is deposited: the first number indicates the diameter of the orifice while the second number indicates the spray angle.

Viscosity	Materials	Recommended nozzle sizes
Low 20-30% solids	Impregnants Inks Enamels-Fixatives-Undercoats Smooth epoxy resin Urethane resins Automotive finishes	007-009 009-011 011-013 011-015 013-015 007-013
Medium 30-50% solids	Tempera and Acrylic Paints Multicolours Emulsions	015-019 024-031 017-021
High 50% (and greater) solids	Fillers Intumescent Stuccoes Elastomers Mastics Epoxy and Bituminous resins	023-031 029-035 029-041 025-033 041-051 041-051

SUPER FAST CLEAN NOZZLES

Compatible with all airless spray guns

Super Fast Clean nozzle + 1 stainless steel gasket Ref. 18280

Size from 11-20 to 51-80

Size - Flow Rate l/m200 bar	Size - Flow Rate l/m200 bar	Size - Flow Rate l/m200 bar	Size - Flow Rate l/m200 bar	Size - Flow Rate l/m200 bar
SFC 11-20 * 0, 55	SFC 19-20 * 1, 77	SFC 25-20 * 2, 90	SFC 31-40 * 4, 83	SFC 41-40 * 8, 10
SFC 11-40 * 0, 55	SFC 19-40 * 1, 77	SFC 25-40 * 2, 90	SFC 31-60 * 4, 83	SFC 43-40 * 9, 67
SFC 13-20 * 0, 80	SFC 19-60 * 1, 77	SFC 25-60 * 2, 90	SFC 31-80 * 4, 83	SFC 43-60 * 9, 67
SFC 13-40 * 0, 80	SFC 21-20 * 2, 15	SFC 27-20 * 3, 50	SFC 33-40 * 5, 50	SFC 43-80 * 9, 67
SFC 13-60 * 0, 80	SFC 21-40 * 2, 15	SFC 27-40 * 3, 50	SFC 33-60 * 5, 50	SFC 45-60 * 9, 80
SFC 15-20 * 1, 10	SFC 21-60 * 2, 15	SFC 27-60 * 3, 50	SFC 33-80 * 5, 50	SFC 47-60 * 10, 70
SFC 15-40 * 1, 10	SFC 23-20 * 2, 57	SFC 27-80 * 3, 50	SFC 35-40 * 6, 00	SFC 51-40 * 12, 20
SFC 15-60 * 1, 10	SFC 23-40 * 2, 57	SFC 29-20 * 4, 30	SFC 37-40 * 6, 70	SFC 51-60 * 12, 20
SFC 17-20 * 1, 41	SFC 23-60 * 2, 57	SFC 29-40 * 4, 30	SFC 39-40 * 7, 10	SFC 51-80 * 12, 20
SFC 17-40 * 1, 41		SFC 29-60 * 4, 30	SFC 39-60 * 7, 10	
SFC 17-60 * 1, 41		SFC 29-80 * 4, 30	SFC 39-80 * 7, 10	



Ref. 18270
Super Fast Clean Base



SFC Super Fast Clean nozzle
with stainless steel Gaskets



Complete Super Fast Clean



Ref. 18280 Stainless steel
Gaskets

Super Fast Clean base

CODE	DESCRIPTION
18270	Super Fast Clean base Europa 11/16" W
18290	Super Fast Clean base USA 7/8 UNF
18291	Super Fast Clean base Asia M18x1.5



TOP SPRAYING CLEAN NOZZLES. Stainless Steel gaskets.

Size from 7-20 to 31-60

SIZE	SIZE
TSC 7-20	TSC 19-20
TSC 7-40	TSC 19-40
TSC 9-20	TSC 19-60
TSC 9-40	TSC 21-20
TSC 11-20	TSC 21-40
TSC 11-40	TSC 21-60
TSC 13-20	TSC 23-20
TSC 13-40	TSC 23-40
TSC 13-60	TSC 23-60
TSC 15-20	TSC 27-20
TSC 15-40	TSC 27-40
TSC 15-60	TSC 27-60
TSC 17-20	TSC 31-40
TSC 17-40	TSC 31-60
TSC 17-60	



Top Spraying Clean nozzle
with Stainless Steel gasket



Complete Top Spraying Clean nozzle

STANDARD NOZZLES

Compatible with all airless spray guns

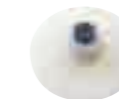
Size from 7-20 to 51-80

Misura - Portata l/m200 bar	Misura - Portata l/m200 bar	Misura - Portata l/m200 bar	Misura - Portata l/m200 bar	Misura - Portata l/m200 bar
ST 7-20 * 0, 26	ST 17-40 * 1, 41	ST 25-60 * 2, 90	ST 33-60 * 5, 50	ST 51-40 * 12, 20
ST 7-40 * 0, 26	ST 17-60 * 1, 41	ST 27-20 * 3, 50	ST 33-80 * 5, 50	ST 51-60 * 12, 20
ST 9-20 * 0, 35	ST 19-20 * 1, 77	ST 27-40 * 3, 50	ST 35-40 * 6, 00	ST 51-80 * 12, 20
ST 9-20 * 0, 35	ST 19-40 * 1, 77	ST 27-60 * 3, 50	ST 37-40 * 6, 70	
ST 11-20 * 0, 55	ST 19-60 * 1, 77	ST 27-80 * 3, 50	ST 39-40 * 7, 10	
ST 11-40 * 0, 55	ST 21-20 * 2, 15	ST 29-20 * 4, 30	ST 39-60 * 7, 10	
ST 13-20 * 0, 80	ST 21-40 * 2, 15	ST 29-40 * 4, 30	ST 39-80 * 7, 10	
ST 13-40 * 0, 80	ST 21-60 * 2, 15	ST 29-60 * 4, 30	ST 41-40 * 8, 10	
ST 13-60 * 0, 80	ST 23-20 * 2, 57	ST 29-80 * 4, 30	ST 43-40 * 9, 67	
ST 15-20 * 1, 10	ST 23-40 * 2, 57	ST 31-40 * 4, 83	ST 43-60 * 9, 67	
ST 15-40 * 1, 10	ST 23-60 * 2, 57	ST 31-60 * 4, 83	ST 43-80 * 9, 67	
ST 15-60 * 1, 10	ST 25-20 * 2, 90	ST 31-80 * 4, 83	ST 45-60 * 9, 80	
ST 17-20 * 1, 41	ST 25-40 * 2, 90	ST 33-40 * 5, 50	ST 47-60 * 10, 70	



PRE-ATOMISERS

Riferimento	Misura Foro
Preatomizzatore 640	0,007"
Preatomizzatore 641	0,009"
Preatomizzatore 642	0,011"
Preatomizzatore 644	0,013"
Preatomizzatore 645	0,018"
Preatomizzatore 646	0,021"
Preatomizzatore 647	0,026"



Nozzle technical specifications table

Nozzle	Spray angle	Ø Inches	Ø Mil-limètres	50 bar	100 bar	150 bar	200 bar
11-20	20°	0.011"	0.28	0.27	0.39	0.47	0.55
11-40	40°						
13-20	20°						
13-40	40°	0.013"	0.33	0.40	0.57	0.69	0.80
13-60	60°						
15-20	20°						
15-40	40°	0.015"	0.38	0.53	0.75	0.91	1.06
15-60	60°						
17-20	20°						
17-40	40°	0.017"	0.43	0.71	1.00	1.22	1.41
17-60	60°						
19-20	20°						
19-40	40°	0.019"	0.48	0.89	1.25	1.53	1.77
19-60	60°						
21-20	20°						
21-40	40°	0.021"	0.53	1.08	1.52	1.87	2.15
21-60	60°						
23-20	20°						
23-40	40°	0.023"	0.58	1.29	1.82	2.23	2.57
23-60	60°						
25-20	20°						
25-40	40°	0.025"	0.63	1.49	2.10	2.56	2.90
25-60	60°						
27-20	20°						
27-40	40°	0.027"	0.68	1.77	2.50	3.05	3.50
27-60	60°						
27-80	80°						
29-20	20°	0.029"	0.74	2.12	3.00	3.66	4.30
29-40	40°						
29-60	60°						
29-80	80°	0.031"	0.79	2.41	3.41	4.18	4.83
31-40	40°						
31-60	60°						
31-80	80°	0.033"	0.83	2.76	3.90	4.75	5.50
33-40	40°						
33-60	60°						
33-80	80°	0.035"	0.89	3.25	4.40	5.25	6.00
35-40	40°						
37-40	40°						
37-40	40°	0.037"	0.94	3.22	4.56	5.58	6.45
39-40	40°						
39-60	60°						
39-80	80°	0.039"	1.00	3.55	5.00	6.10	7.10
41-40	40°						
43-40	40°						
43-60	60°	0.043"	1.10	4.83	6.83	8.37	9.67
43-80	80°						
45-60	60°						
47-60	60°	0.045"	1.15	6.00	7.50	9.00	9.80
51-60	60°						
51-80	80°						
51-60	60°	0.047"	1.20	6.90	8.00	9.60	10.70
51-80	80°						
51-60	60°	0.051"	1.30	6.40	9.10	11.10	12.20
51-80	80°						

Size of the spray pattern

This is defined by the spray angle with spraying at a distance of 30 mm from the surface.

Orifice size

This determines the quantity of paint that flows through the nozzle.

The effective flow capacity depends on the spray pressure and the paint used. A high pressure implies a greater flow capacity, whereas a thicker paint corresponds to a lower flow capacity.

Each painting machine has a maximum flow capacity and a larger nozzle than the one your equipment supports must never be used.



Super Fast Clean Base



Super Fast Clean SFC Nozzle with stainless steel gasket



Complete Super Fast Clean

Test liquid: Water.

ATTENTION: The listed flow capacities are approximate and should not be used as an absolutely precise reference.

"To ensure better operation and increased safety, use only original Larius parts and accessories."

FLOW REGULATORS LOW PRESSURE

CODE	DESCRIPTION
7180	Low pressure flow regulator 0-7 bar
7181	Low pressure flow regulator 0-14 bar
7200	Low pressure stainless steel flow regulator 0-7 bar
7202	Low pressure stainless steel flow regulator 0-14 bar
7185	Low pressure flow regulator with pressure gauge 0-7bar
7186	Low pressure flow regulator with pressure gauge 0-14bar
7201	Stainless steel low pressure flow regulator with pressure gauge 0-7 bar
7203	Stainless steel low pressure flow regulator with pressure gauge 0-14bar
7190	Low pressure flow regulator for thick products 0-14bar
7204	Stainless steel low pressure flow regulator with gauge for thick products 0-14bar
7204/1	Flow regulator for dense products with reinforced diaphragms
7195	Low pressure pneumatic flow regulator with gauge 0-14bar
7205	Stainless steel low pressure pneumatic flow regulator with gauge 0-14 bar. With closing ball valve
7208	Stainless steel low pressure recirculation regulator 0-14bar
7208/1	Stainless steel low pressure recirculation pneumatic regulator



Ref. 7180



Ref. 7185



Ref. 7208/1



Ref. 7205

FLOW REGULATORS HIGH PRESSURE

CODE	DESCRIPTION
7000	Stainless steel high pressure regulator for recirculation 10-210 bar
7030	Stainless steel high pressure flow regulator 10-210 bar low viscosity
7040	Stainless steel high pressure flow regulator 10-210 bar high viscosity
7050	Stainless steel flow regulator for mastics 10-320 bar
7130	Automatic flow regulator for mastics 10-130 bar



Ref. 7050



Ref. 7000



Ref. 7030
Ref. 7040 (Dense products)



Ref. 7130

LEGEND:

- Yellow spring Extra strong
- Red spring Strong
- Blue spring Medium
- Green spring Light



Ref. 7050



Ref. 7030
Ref. 7040 (Dense products)

SPRING FOR REGULATORS

PAINTS REGULATOR Code 7030

Red standard spring	Code 7011	Adjustment range field 30-210 BAR
Blue spring	Code 7031	Adjustment range field 30-110 BAR
Green spring	Code 7024	Adjustment range field 30-70 BAR

DENSE PRODUCTS REGULATOR Code 7040

Red standard spring	Code 7011	Adjustment range field 30-190 BAR
Blue spring	Code 7031	Adjustment range field 30-110 BAR
Green spring	Code 7024	Adjustment range field 30-70 BAR

MASTICS REGULATOR Code 7050

Yellow standard spring	Code 7052	Adjustment range field 10-320 BAR
------------------------	-----------	-----------------------------------

N.B. These data are purely indicative

REGULATORS KIT

CODE	DESCRIPTION
40403	Low pressure flow regulator kit for code 7200
40404	Low pressure flow regulator kit for code 7204
40340	High pressure regulator kit for code 7000
40342	High pressure flow regulator kit for code 7030
40344	High pressure flow regulator kit for code 7040 heavy products
40341	Regulator kit for thick products for code 7050
40343	Pneumatic regulator kit for code 7130

“To ensure better operation and increased safety, use only original Larius parts and accessories.”

HEATER Certification atex II 3 G nC IIB T3 Gc

CODE	DESCRIPTION
6099	HEATER Complete with temperature adjustment control, indicator light thermometer, thermostat probe, heater, fuse, thermostat, safety thermostat with manual reset

HEATER TECHNICAL FEATURES

Supply voltage	230 V
Max current consumption	11 A
Power	3100 W
Max. operating pressure:	350 Bar
Temperature control range	T. Amb ÷ 90°C
Max operating temperature	90°C
Flow	60 l/h a 60°C
Weight	20 kg



HEATING BANDS

CODE	DESCRIPTION
6000	Heating bands for 30 litre drums
6001	Heating bands for 200 litre drums



"To ensure better operation and increased safety, use only original Larius parts and accessories."

LOW PRESSURE DOUBLE HOSE

Maximum pressure 32 bar

CODE	DESCRIPTION	
8150	Low pressure double hose Ø 1/4" x 1/4" 5 m	
8151	Low pressure double hose Ø 1/4" x 1/4" 7,5 m	
8152	Low pressure double hose Ø 1/4" x 1/4" 10 m	

HIGH PRESSURE DOUBLE HOSE

Maximum pressure 220 bar

CODE	DESCRIPTION	
14060	High pressure double hose Ø 3/16" with fitting 1/4" 5m	
14061	High pressure double hose Ø 3/16" with fitting 1/4" 7,5 m	
14062	High pressure double hose Ø 3/16" with fitting 1/4" 10 m	
14063	High pressure double hose Ø 3/16" with fitting 1/4" 15 m	

ANTISTATIC AIRLESS HOSE

Maximum pressure 210 bar

CODE	DESCRIPTION	
6164	Antistatic hose Ø 3/16" with M16X1,5 fitting 5 m	
55050	Antistatic hose Ø 3/16" with M16X1,5 fitting 7,5 m	
18015	Antistatic hose Ø 3/16" with 1/4" GAS fitting 5 m	
18016	Antistatic hose Ø 3/16" with 1/4" GAS fitting 7,5 m	
18017	Antistatic hose Ø 3/16" with 1/4" GAS fitting 10 m	

ANTISTATIC AIRLESS HOSE

Maximum pressure 228 bar

CODE	DESCRIPTION	
35013	Antistatic hose Ø 1/4" with M16X1,5 fitting 5 m	
35014	Antistatic hose Ø 1/4" with M16X1,5 fitting 7,5 m	
18021	Antistatic hose Ø 1/4" with 1/4" GAS fitting 5 m	
18022	Antistatic hose Ø 1/4" with 1/4" GAS fitting 7,5 m	
18025	Antistatic hose Ø 1/4" with 1/4" GAS fitting 10 m	
18024	Antipulsation hose Ø 1/4" with 1/4" GAS fitting 15 m 15	
18026	Antipulsation hose Ø 1/4" with M16X1,5 fitting 15 m	
18510	Antipulsation hose Ø 3/8" with M16X1,5 fitting 15 m	

ANTISTATIC AIRLESS HOSE

Without fittings and bushings. Maximum pressure 228 bar Price per metre

CODE	DESCRIPTION	
18505	Antistatic hose Ø 1/4" Price for metre	
18503	Antistatic hose Ø 3/16" Price for metre	
18509	Antistatic hose Ø 3/8" Price for metre	

AIRLESS BRAID STAINLESS STEEL HIGHT PRESSURE HOSE

For airless diaphragm pumps: Mirò - Dali²- Viking - Giotto.

Maximum pressure 300 - 350 bar.

CODE	DESCRIPTION	
35017	Braid stainless steel high pressure hose Ø 1/4" with M16X1,5 fitting mt.10. Maximum pressure 300 bar	
35018	Braid stainless steel high pressure hose Ø 3/16" with M16X1,5 fitting mt.10. Maximum pressure 350 bar	
18023	Braid stainless steel high pressure hose Ø 1/4" with 1/4 fitting mt.10. Maximum pressure 300 bar	
35019	Braid stainless steel high pressure hose Ø 3/16" with M16X1,5 fitting mt.15. Maximum pressure 350 bar	



"To ensure better operation and increased safety, use only original Larius parts and accessories."

LAREX HOSE

Maximum pressure 425 bar

CODE	DESCRIPTION	
18063	Larex hose Ø 3/8" with M16X1,5 fitting 7,5 m	
18064	Larex hose Ø 3/8" with M16X1,5 fitting 10 m	
18065	Larex hose Ø 3/8" with M16X1,5 fitting 15 m	

LAREX HOSE

Without fittings and bushings. Price per metre Maximum pressure 425 bar

CODE	DESCRIPTION	
18506	Larex hose 1/4" W.P 500 bar	
18560	Special fittings kit 700 Bar 1/4"	

LAREX HOSE Maximum pressure 500 bar

CODE	DESCRIPTION	
18530	Larex hose Ø 1/4" with 1/4" GAS fitting 7,5 m	
18535	Larex hose Ø 1/4" with 1/4" GAS fitting 10 m	

ANTI-ABRASIVE RUBBER HOSE Maximum pressure 250 bar

CODE	DESCRIPTION	
85024	Antibrasive rubber hose with M16X1,5 fitting, 10 m	

ULTRA-HIGH PRESSURE HOSE

Maximum pressure 700 bar. Price per metre

CODE	DESCRIPTION	
18550	Ultra-high pressure hose Ø 1/4"	
18560	Special fittings kit 700 Bar 1/4"	

COMPLETE SUCTION SYSTEMS WITH RETURN

CODE	DESCRIPTION	
16610	Suction/return system for dense product ranges Ghibli - Vega	
21645	Suction/return system Mirò	
16611	Suction/return system for Ghibli and Vega, stainless steel	
8131	Suction/return system LARIUS 2	
8144	Suction/return system LARIUS 2, stainless steel	
95055	Suction/return system Nova and Omega	
98055	Suction/return system Nova and Omega, stainless steel	
85009	Suction/return system Giotto-Dali	
85026	Suction/return system Giotto-Dali, stainless steel	
37490	Flexible Suction/return system Taurus	
16671	Suction/return system Zefiro	
18370	Suction/return system Excalibur	
20550	Suction/return system Thor	
30175	Suction/return system Dragon	



"To ensure better operation and increased safety, use only original Larius parts and accessories."

PTFE STAINLESS STEEL HOSES Single braid - Double braid

CODE	DESCRIPTION
18084	PTFE hose 1/2" 5 m Double braid stainless steel female revolving fitting 1/2"
18085	PTFE hose 1/2" 7 m Double braid stainless steel female revolving fitting 1/2"
18092	PTFE hose 1/4" 4 m Double braid stainless steel female revolving fitting 1/4"
18090	PTFE hose 3/4" 10 m Double braid stainless steel female revolving fitting 3/4"
18087	PTFE hose 3/4" 3 m Double braid stainless steel female revolving fitting 3/4"
18088	PTFE hose 3/4" 5 m Double braid stainless steel female revolving fitting 3/4"
18089	PTFE hose 3/4" 7 m Double braid stainless steel female revolving fitting 3/4"
18091	PTFE hose 3/8" 3 m Double braid stainless steel female revolving fitting 3/8"

On request available with different sizes

HOSE ROLLER

CODE	DESCRIPTION
18555	Manual hose roller for hose 3/16" - 3/8" - 1/4" Max lenght 20m
18557	Manual hose roller for hose with entrance M16X1,5

GRAVITY TANKS LT. 6

CODE	DESCRIPTION
55007	Gravity tank 6-litre Larius 2
35101	Gravity tank 6-litre Vega and Ghibli

GRAVITY TANKS LT. 50 - LT. 100

CODE	DESCRIPTION
18245	Gravity tank 50 lt
18241	Gravity tank 50 lt with Basket
18242	Trolley complete with 50 lt gravity tank
18243	Gravity tank 100 lt

DOUBLE GRAVITY TANK LT.30 each.

CODICE	DESCRIZIONE
20802	White gravity tank lt.30
20802/1	Blue gravity tank lt.30



"To ensure better operation and increased safety, use only original Larius parts and accessories."

PACKAGE PRESSING SYSTEM WITH LT. 100 TANK

CODE	DESCRIPTION
18390	Package pressing system with lt. 100 tank
18244	Package pressing system kit



STAINLESS STEEL PRESSURE TANKS

CODE	DESCRIPTION
18700	Stainless steel pressure tank 9-litre Complete with double air pressure regulation, 5-metre double hose, W71 spray gun with nozzle on choice
18704	Stainless steel pressure tank 9litre+ double air pressure regulation
18701	Stainless steel pressure tank 18c-litre Complete with double air pressure regulation, 5-metre double hose, W71 spray gun with nozzle on choice
18703	Stainless steel tank 18-litre + double air pressure regulation
18709	Stainless steel pressure tank 9-litre + mixer without accessories
18710	Stainless steel pressure tank 18-litre + mixer without accessories



STAINLESS STEEL 304 TANK LT.30 - LT. 50
Half-opening tank. Without accessories

CODE	DESCRIPTION
24591	Stainless Steel 304 tank lt.30
24592	Stainless Steel 304 tank lt.50

Available also with agitator, level indicator and higher capacity



STAINLESS STEEL 304 TANK LT.30 - LT. 50
Air-tight cover. Without accessories

CODE	DESCRIPTION
24593	Stainless Steel 304 tank lt.30
24594	Stainless Steel 304 tank lt.50

Available also with agitator, level indicator and higher capacity



"To ensure better operation and increased safety, use only original Larius parts and accessories.

PRE-NOZZLE FILTERS

CODE	DESCRIPTION
270	Filtro PLA 100 Mesh
271	Filtro PLA 60 Mesh

GHIBLI - VEGA - NOVA - OMEGA - THOR SIEVE FILTERS

CODE	DESCRIPTION
95218	30 mesh stainless steel sieve filter
95218/10	30 mesh stainless steel sieve filter 10 pieces
95219	60 mesh stainless steel sieve filter
95219/10	60 mesh stainless steel sieve filter 10 pieces
95220	100 mesh stainless steel sieve filter
95220/10	100 mesh stainless steel sieve filter 10 pieces
95221	200 mesh stainless steel sieve filter
95221/10	200 mesh stainless steel sieve filter 10 pieces

SPRAY GUN BUTT FILTERS

CODE	DESCRIPTION
11019	200 mesh spray gun butt filter Red
11019/25	200 mesh spray gun butt filter Red 25 pieces
11037	100 mesh spray gun butt filter Yellow
11037/25	100 mesh spray gun butt filter Yellow 25 pieces
11038	60 mesh spray gun butt filter White
11038/25	60 mesh spray gun butt filter White 25 pieces
11039	30 mesh spray gun butt filter Green
11039/25	30 mesh spray gun butt filter Green 25 pieces

LARIUS 2 SIEVE FILTER

CODE	DESCRIPTION
16203	200 mesh stainless steel sieve filter
16203/10	200 mesh stainless steel sieve filter 10 pieces
16204	100 mesh stainless steel sieve filter
16204/10	100 mesh stainless steel sieve filter 10 pieces
16205	60 mesh stainless steel sieve filter
16205/10	60 mesh stainless steel sieve filter 10 pieces

FILTERS

CODE	DESCRIPTION
96200	Line filter Ghibli and Vega
98387	Stainless steel line filter Ghibli and Vega
8049	Line filter for larius 2 long version
95200	Line filter for Nova and Omega
98300	Line filter stainless steel for Nova and Omega
8107	Line filter for larius 2 with suction system
8113	Line filter for larius 2 with gravity tank



"To ensure better operation and increased safety, use only original Larius parts and accessories.

SUCTION BELL – FILTER DISC

CODE	DESCRIPTION
21647	Complete bell filter Mirò
35004	Complete bell filter Lariette
35006	Fine disc filter 100 mesh
35006/10	Fine disc filter 100 mesh 100-piece pack
35007	Coarse disc filter 50 mesh
35007/10	Coarse disc filter 50 mesh 10-piece pack
35007/1	Coarse disc filter 50 mesh
35007/1A	Coarse disc filter 50 mesh 10-piece pack



DRUM FILTERS

CODE	DESCRIPTION
85014	Fine drum filter 40 mesh
37215	Stainless steel fine drum filter 40 mesh
85012	Coarse drum filter 20 mesh
37216	Coarse stainless steel drum filter 20 mesh



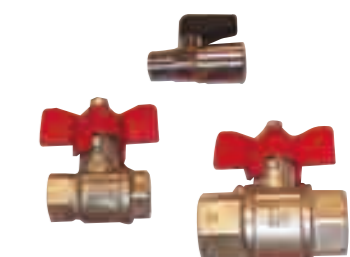
REVOLVING FITTINGS AND NIPPLES

CODE	DESCRIPTION
11015	Revolving fitting M14x1-M16X1,5
10155	Revolving fitting M14x1-1/4"
10156	Revolving fitting PLA 1/4" - 1/4"
10159	Revolving fitting PLA 1/4" -M16X1,5
10154	Revolving fitting PLA 1/4" - 1/8"
11140	Mini Revolving fitting 1/4" -M11x1
11150	Mini Revolving fitting 1/4" - 1/4"
3199	High pressure fitting 1/4"M - 16x1,5M
3289	High pressure fitting 1/4 "M
3276	Revolving high pressure fitting M16X1,5 cylindrical 1/4" F
33006	Cylindrical high pressure nipple M16X1,5
95231	Cylindrical high pressure nipple 3/8"- M16X1,5
22022	Cylindrical high pressure nipple 3/8" - 1/4"
34109	Cylindrical high pressure nipple 3/8"



MANIFOLDS

CODE	DESCRIPTION
4004	Manifolds M-F 1/4"
91101	Manifolds F-F 3/8"
96253	Manifolds F-F 1/2"



"To ensure better operation and increased safety, use only original Larius parts and accessories."

HIGH PRESSURE BALL VALVES

CODE	DESCRIPTION
33035	1/2" ball valve
33038	1/2" ball valve, stainless steel
33013	1/4" ball valve
98325	1/4" ball valve, stainless steel
750049	3/4" ball valve
33034	3/8" ball valve
33037	3/8" ball valve, stainless steel

PRESSURE GAUGES

8167	Air pressure gauge Ø 40 rear connection, 1/8" conical gas Double concentric scale 0-12 bar and 0-180 psi
96259	Air pressure gauge Ø 50 rear connection, 1/8 conical gas Double concentric scale 0-10 bar and 0-150 psi
5397	Air pressure gauge Ø 40 flange rear connection, 1/8" conical gas Double concentric scale 0-12 bar and 0-180 psi
8168	Low pressure fluid pressure gauge Ø 60, radial connection 1/4" gas Double concentric scale 0-18 bar and 0-120 psi
33008	High pressure fluid pressure gauge Ø 60, radial connection 1/4" gas Double concentric scale 0-40 Mpa and 0-5800 psi
53011	High pressure fluid pressure gauge Ø 60, rear connection 1/4" gas Double concentric scale 0-40 Mpa and 0-5800 psi
147	High pressure gauge, M16X1,5 M+female revolving fitting. , Double concentric scale 0-40 Mpa and 0-5800 psi
148	High pressure gauge, with 1/2" female revolving fitting. Double concentric scale 0-40 Mpa and 0-5800 psi
150	High pressure gauge, 1/4" M+M16X1,5 female revolving fitting Double concentric scale 0-40 Mpa and 0-5800 psi

ELECTRIC MIXERS

217550	Mixer MX850, Power 850 W
217560	Mixer MX1100, Power 1080 W
217570	Mixer MX1100E, Power 1080 W

PNEUMATIC MIXERS

217000	Pneumatic mixer on telescopic tripod
91044	Pneumatic mixer for 30 litre drums
6076/2	Pneumatic mixer for 200 litre drum
6077	Mixer with pneumatic gearmotor for 200 litre drum

COVER WITH PNEUMATIC MIXER DRUMS

6065	Cover with pneumatic mixer for 30 litre drum
6065/1	Cover with mixer and pneumatic gearmotor for 30 litre drum
6076	Cover with pneumatic mixer for 200 litre drum
6077/1	Cover with pneumatic mixer gearmotor for 200 litre drum

ACCUMULATORS

3374	Diaphragm antipulsations 220 bar
4756	Piston antipulsations 250 bar



PNEUMATIC PISTON PUMP SPARE PARTS KIT



PTFE GASKETS KIT P33 1:1 Ref. 40030



REPAIR KIT VEGA 23:1 Ref. 40045



REPAIR KIT GHIBLI 40:1 Ref. 40060



SCREW BAR KIT VEGA - GHIBLI Ref. 40401



PTFE GASKETS KIT NOVA 45:1 OMEGA 23:1 Ref. 40070



GASKETS KIT NOVA 60:1 - OMEGA 30:1 STAINLESS STEEL PTFE Ref. 40076



GHIBLI 24:1 GASKETS Ref. 40273



PTFE GASKETS KIT P31 2:1 Ref. 40041



GHIBLI MOTOR Ref. 40050



PTFE GASKETS KIT VEGA 5:1 in line Ref. 40039



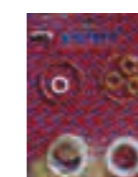
REPAIR KIT VEGA 45:1 IN LINE Ref. 40402



GASKETS KIT FOR NOVA 45:1 - OMEGA 23:1 STAINLESS STEEL Ref. 40071



GASKETS KIT NOVA 68:1 - OMEGA 34:1 Ref. 40300



REPAIR KIT NOVA 55:1 (Extrusion) OMEGA 28:1 (Extrusion) Ref. 40265



VEGA 23:1 MOTOR Ref. 40040



REPAIR KIT GHIBLI 30:1 - VEGA 15:1 Ref. 40055



PTFE GASKETS KIT V5:1 - G10:1 divorced Ref. 40236



NOVA MOTOR Ref. 40065



OMEGA MOTOR Ref. 40345



LOW PRESSURE REGULATOR Ref. 40403

PNEUMATIC DIAPHRAGM PUMP SPARE PARTS KIT



L2 DIAPHRAGM KIT Ref. 40331



L4 MOTOR GASKETS Ref. 40332



L2 BALL SEAT Ref. 40334



L4 BALL SEAT Ref. 40336



L2 MOTOR GASKETS Ref. 40335



L4 DIAPHRAGM KIT Ref. 40337

ELECTRIC PUMP SPARE PARTS KIT



LOWER SECTION REPAIR KIT EXCALIBUR
Ref. 40106



EXCALIBUR GASKETS KIT
Ref. 18855



LOWER SECTION REPAIR KIT ZEFIRO
Ref. 40116



LOWER SECTION REPAIR KIT TAURUS
Ref. 40347



COMPLETE GASKETS KIT THOR
Ref. 20173



COMPLETE DIAPHRAGM KIT MIRO
Ref. 40130



MIRÓ DISCHARGE VALVE KIT
Ref. 40131



DALÍ DIAPHRAGM KIT
Ref. 40234



KIT VALVOLA DI SCARICO DALÍ
Ref. 33033



GIOTTO DIAPHRAGM KIT
Ref. 40175



GIOTTO DISCHARGE VALVE KIT
Ref. 83033



Complete pump spare parts KIT
DRAGON
Ref. 40108



Complete pump spare parts KIT
NEW EXCALIBUR JOLLY
JOLLY TOP FINISH
Ref. 40107



Complete pump spare parts KIT
ZEUS
Ref. 35185



Complete pump spare parts KIT
THOR
Ref. 40109

KIT PISTOLE



AT300 GASKETS KIT
Ref. 40015



AT300 REPAIR KIT
Ref. 40020



AT250 REPAIR KIT
Ref. 40005



L91X REPAIR KIT
Ref. 40280



PLA KIT
Ref. 40220



REPAIR KIT AUTOMATIC LA95 GUN
Ref. 40080

GENERAL SALES CONDITIONS

These Terms and Conditions shall be deemed as essential and integral part of any LARIUS supply (hereinafter also the "Company") starting from today, even if not mentioned in the individual order, and until otherwise provide, and replace any condition previously imposed by the Company or by the Buyer (hereinafter also "Customer").

1. SCOPE OF SUPPLY

- 1.1 The supply consists of the material and quantities specified in our order confirmation.
- 1.2. The information contained in our catalogs, websites, photographs, and generally in all our documents, should be intended as a demonstration and not binding, as only the information enclosed within the order confirmations and countersigned by the Company shall be considered as such.
- 1.3. Ownership of illustrations, technical information of the supplied goods remains exclusively in the hands of the Company, without the possibility of dissemination or copying.

2. ORDER PROCEDURE

- 2.1 Orders must be received in writing (also by subscribing to our order confirmation) and must be provided with all the necessary information for a proper performance of the supply;
- 2.2 LARIUS is released from all liabilities related to the accuracy of the information received for the purposes of the order.

3. PRICES AND OFFERS

- 3.1 The products price is defined in the order confirmation of the Company, excluding VAT and other taxes, unless indicated otherwise;
- 3.2 The goods price is considered ex works LARIUS, unless otherwise stated in writing.

4. ORDER CONFIRMATION

- 4.1 If the LARIUS order confirmation were to be different, in its individual elements, compared to previous agreements or to the received order, the customer is required to contest this in writing within 5 days from receipt; otherwise it shall be considered accepted as per this edited version.

5. DELIVERY

- 5.1. The delivery dates shown in the LARIUS order confirmation are approximate and not binding;
- 5.2. Therefore, any delay will not be considered sufficient ground to terminate this contract for failure of the order in progress;
- 5.3. In no event shall the Company be liable for damages or penalties related to delays, since the parties agreed to consider the order confirmation terms as not binding;
- 5.4. Nevertheless, the Company will do all the necessary to avoid delays related to confirmed delivery dates;

6. DELIVERY METHOD

- 6.1 The product delivery shall be agreed as ex works LARIUS, destination specified by the customer in the order confirmation, unless otherwise agreed in writing;
- 6.2 Failure to collect and / or refusal of delivery exempt LARIUS from any responsibility related to the product detention, without any obligation of notice.

7. PRODUCT QUALITY

- 7.1 LARIUS guarantees that the supplied goods, under the terms set out in the order confirmation, are of such quality meeting the indicated features in their data sheets and comply with the requirements in force in Italy for each product; free from faults or defects that make them unsuitable for the purpose for which they were made and which are normally intended to be, or to considerably impair their value. LARIUS assumes no responsibility for the maintenance of product quality provided that the same has been manipulated and / or transformed by the buyer and / or not stored / maintained according the normal knowledge of use.

8. DISPUTES

- 8.1 Claims for shortage or damages apparent from exterior examination of goods must be expedited, from the Buyer to the Company, within 5 days of receipt or risk forfeiture.
- 8.2 Hidden defects, subsequently emerged, must be reported within the same period of time;
- 8.3 In the event of a dispute, the Buyer must refrain from using the product, which should be properly preserved in order to allow the necessary checks and pending notices by the Company.

9. GUARANTEES

- 9.1 To the extent of any provision of these terms and conditions and of a prompt complaint, LARIUS is committed to remedying any defect of the contract products, that is a result of a material or workmanship error, for a period of 30 days from the delivery date of each single product;
- 9.2 The existence of defects does not lead to the termination of the contract, neither to the Buyer's right of demanding any compensation amount of money, but only to the right of replacing the defective product. In the latter case, the replaced product will return to the Company property;
- 9.3 With this regards, it is expressly agreed that the Buyer shall not be able to raise any further claims against the Seller for any reason or cause, and in particular for damage and loss of earnings;
- 9.4 Excluded from this warranty are defects caused by normal wear and tear of the contract goods or those coming from improper use of the goods;
- 9.5 Items reported as defective must be returned to LARIUS freight prepaid, accompanied by a regular delivery note, giving details of the LARIUS sale invoice.
- 9.6 The guarantee referred to in this Article shall not include in any case transport costs, delivery and possible transfers from the LARIUS staff;
- 9.7 In no event shall any dispute of the material entitle the Buyer to withhold or delay in full or part the payment according to the agreed terms.
- 9.8 LARIUS does not recognize the warranty for parts in direct contact with the product, unless they're checked and approved by LARIUS

10. PAYMENT

- 10.1 The payment terms and conditions are those reported in the order confirmation;
- 10.2 The payment delay, even partial, of LARIUS invoices beyond the stipulated deadline will result in a charge, without formal notice, of interests according the Legislative Decree 231/2002;
- 10.3 It is understood that the non-payment or delayed payment of even a single bill will invoke the acceleration clause for all the issued invoices, so that the corresponding amounts will be considered immediately due and payable;
- 10.4 In such cases, LARIUS shall be also entitled to consider temporarily suspended or permanently terminated the contract, not carrying any evasion of orders, and the Buyer cannot lay any claims of remuneration, compensation or otherwise, for any reason or cause;

11. RETENTION OF TITLE

- 11.1 In the event that payment, for contractual arrangements, should be made in whole or in part, after delivery, the delivered products shall remain on LARIUS property until full payment of the price is done, meaning the sale with retention of title pursuant to art. 1523 of the Civil Code

12. EXCLUSIVE JURISDICTION AND FINAL CLAUSE

- 12.1 Any dispute concerning the execution or validity of this contract shall be exclusively dealt by the Court of LECCO;
- 12.2. No addition, change, or waiver to the present general conditions shall be considered valid unless approved in writing by the parties.

LARIUS®

Transfer - Extrusion - Injection pumps - Paint spraying equipment

Made in Italy dal 1969

Catalogue 2016

Paint decoration & Construction
Airless road marking machines



01-01-2016