

# GOATS®

# V200

POWERED BY **DIRECT/DRIVE**



**vero**™  
SERIES  
with  
**ProBalance**™  
TECHNOLOGY

# A PERFORMANCE BALANCE. THE FIRST TIME, EVERY TIME.

The new Vero Series™ V200 takes wheel balancing to a new level by eliminating the compromises that plague other balancing methods. Powered by Coats®' exclusive Direct Drive system, the V200 delivers a superior balance result, the first time, every time.

The Vero Series V200 features Coats' new ProBalance™ Technology - a unique balancing algorithm and unbalance correction methodology - that solves a leading cause of comebacks: residual unbalance. ProBalance Technology works discreetly in the background of every balancing cycle to eliminate the risks associated with other technologies that ignore—or worse yet—intentionally leave residual unbalances that generate unwanted vibration.

The V200's Laser Guided Operation® offers flawless radial and axial weight positioning with commanding certainty. An industrial-grade interactive touchscreen interface delivers step-by-step, error-proof balancing cycles with lightning-fast floor-to-floor times.

Every feature of the Vero Series V200 was designed to deliver a performance balance for your customers that is beyond just "OK." The first time. Every time.

coats®

**DIRECT/DRIVE**

EXCLUSIVELY FROM COATS®

**10-YEAR WARRANTY ON  
DIRECT DRIVE MOTORS!\***

Coats' Direct Drive system integrates the balancer's robust motor and spindle into a single, factory pre-balanced assembly with zero noise. The result is that, unlike other wheel balancers, zeros on a Vero Series wheel balancer are **always true zeros**, and they **always** mean "balanced," thus eliminating the need for frequent calibration.

**ProBalance™**  
TECHNOLOGY

Vero Series wheel balancers employ a unique balancing algorithm in combination with the most reliable and accurate balancing systems & technologies to simultaneously minimize both static and couple unbalance, resulting in a no-compromise, performance balance that's beyond just "OK".

**LASER GUIDED OPERATION** 

Our patented Laser Guided Operation pinpoints the exact weight location, both radially and axially, eliminating trial and error, even on behind-the-spoke balances. The system works seamlessly with the Vero Series' Stop, Lock and Index functionality.

\*On Vero Series Direct Drive Motors

## INDUSTRIAL TOUCHSCREEN

- Weight Location Recognition System offers touch-free operation for ≈85% of wheel balances.
- Rugged, industrial grade touchscreen system built to last.
- Resistive Touch Technology means gloves are no problem.
- Delivers context-sensitive instructions that can be toggled on and off for different technician experience levels.

## ERROR-PROOF OPERATION

- Virtually anyone is an instant technician with the Coats® touchscreen.
- The easy-to-read touchscreen promotes proper balancing techniques for lightning-fast floor-to-floor times.
- Speeds up the balancing process and provides on-screen, step-by-step instructions and training to ensure more one-spin balances.

## PROBALANCE™ TECHNOLOGY

- Calculates precise corrective weight amounts and placement locations to prevent undesirable residuals.
- Reduces 80% of unbalance-related comebacks.
- When weight round-off scenarios or operator weight-placement errors interfere, offers a fast, single-step correction to ensure a performance balance, the first time, every time.







## DIRECT DRIVE

- Vero Series™ Direct Drive system integrates the balancer's robust motor and spindle into a single, factory pre-balanced assembly with ZERO noise. No vibration or noise.
- Zeros always mean balanced.

## LASER GUIDED OPERATION®

- Pinpoints the exact weight location, both radially and axially.
- Eliminates trial and error.
- Facilitates easy behind-the-spoke balances.

## AUTOMATIC DATA ENTRY

- The V200-2D offers automatic data entry of the distance and diameter parameters. The V200-3D offers automatic data on all three parameters: distance, diameter and width.
- Eliminates opportunity for technician error and speeds up balancing process.

## STOP, LOCK & INDEX

- Automatically positions the wheel at the weight placement location.
- Locks spindle in place for easy, accurate weight application.
- Delivers faster floor-to-floor times.



# HOW DOES PROBALANCE™ TECHNOLOGY WORK?

Aided by the unparalleled accuracy of its Direct Drive system, The Vero Series™ ProBalance Technology precisely measures both static and couple unbalances. It then calculates the exact corrective weight amounts and placement locations in order to simultaneously minimize both types of unbalance. No compromises. No subjective trade-offs.

## HOW IS PROBALANCE DIFFERENT FROM CONVENTIONAL DYNAMIC BALANCING?

Conventional wheel balancers typically operate with a 0.25 ounce blind. In other words, the balancer will show "0.00" up to and including the scenario where the actual residual is 0.24 ounces in either plane. You would see this value by taking the balancer out of "round off" mode.

In the best case scenario, these small residual unbalances are 180 degrees apart

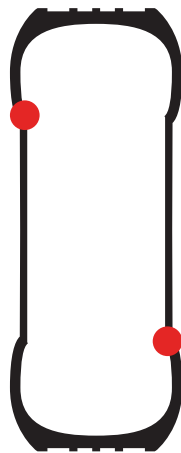


Fig. 1

on opposite sides, and will not result in an excess residual unbalance problem (See Figure 1).

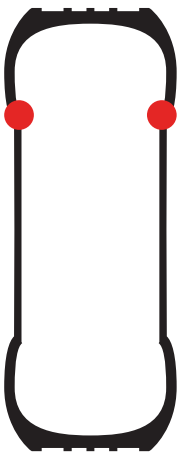


Fig. 2

However, when these residual unbalances are completely in-phase (as depicted in Figure 2), they are additive, and the result can be up to 0.48 ounces of residual static unbalance! By OE standards,  $\approx 0.5$  ounce of static unbalance will generate an unacceptable ride disturbance in a multitude of vehicles.

## HOW IS PROBALANCE DIFFERENT FROM WEIGHT-SAVING BALANCERS?

A weight-saving balancer's main operational goal is to attempt to lower wheel weight consumption. They accomplish these savings by instructing the technician to apply less corrective weight than is necessary to balance the wheel. Surprised? Here is how weight-saving balancers work:

A weight-saving balance starts off much like any other. The machine assesses both static and couple unbalances. The machine then calculates corrective weight amounts and weight placement location(s) in order to:

- Eliminate or reduce static unbalance
- Leave a residual couple unbalance (see Figure 3) that is thought not to cause a vibration complaint.

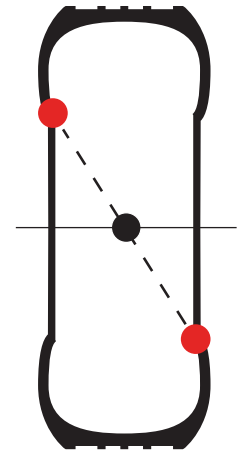


Fig. 3

So, a wheel serviced on a weight-saving balancer is, in many cases, not actually balanced!

Almost any unbalance will cause a vibration at or above a certain speed. Why risk an unsatisfied customer for about \$1 per vehicle in savings?

**The Vero Series' ProBalance Technology assures that all excess unbalances are reduced or eliminated the first time, every time. No compromises. No subjective trade-offs. No settling for just "OK".**

# V200 SPECIFICATIONS

FEATURES	
ProBalance™ Technology	Yes
Interface	Industrial Touch
Drive System	1.5hp Direct Drive
Automatic Data Entry (model V200-2D)	Distance & Diameter
Automatic Data Entry (model V200-3D)	Distance, Diameter & Width
Stop, Lock and Index	Standard
Auto Indexing	Standard
Pin-Point Laser Guided Operation®	Standard
Double Threaded Speed Shaft	Standard
Modular Adapter Studs	Standard (Qty 4)

SPECIFICATIONS	
Balancing Modes	12
Wheel Diameter Range	8"-30" (Auto 15"-30")
Wheel Width Range	2"-20"
Max Tire Diameter	up to 44"
Shaft Diameter	40mm
Power Requirements	220V, 1ph or 3ph, 50/60Hz
Placement Accuracy	512 positions
Unbalance Resolution	.01oz
Footprint	57" w x 67" d
Shipping Weight	650 lbs.

## VERO SERIES™ ADAPTER KITS

DESCRIPTION	PART #	BASIC PRO	EXTENDED PRO	PREMIUM PRO
		Part # 85609487	Part # 85609488	Part # 85609489
		Most OE passenger cars & some OE light trucks	Most OE passenger cars & most OE light trucks	Most OE & aftermarket passenger cars & light trucks
Bracket/Peg Accessory	8111054	X	X	X
Stud - Weight Tray (6)	85608850	X	X	X
8 Double Sided Collets (2.03"-5.32")	85609499	X	X	X
Calipers	8309011	X	X	X
Premium Wheel Weight Hammer	8113175	X	X	X
Premium Quicknut	85607503	X	X	X
Small Pressure Cup & Rubber Lip	8112106	X	X	X
No Mar Ring	85608312	X	X	X
Spring	8112107	X	X	X
Scraper	8113390	X	X	X
Short Cone	8112421		X	X
Light Truck Cone Kit (4.8" - 6.8")	8113277C		X	X
Faceplate Extension	8111935		X	X
Pin Plate System with Balancer Mate	8KPPBM40			X

**vero**™  
SERIES

**coats**®



To learn more about the Coats® Vero Series™ V200 wheel balancer, or any of our other quality products, visit [www.ammcoats.com](http://www.ammcoats.com); or call 1-855-876-3864.

[WWW.AMMCOATS.COM](http://WWW.AMMCOATS.COM)

1601 J.P. Hennessy Drive, LaVergne, TN 37086 (800) 688-6496 or (615) 641-7533

**Hennessy Canada:** 2430 Lucknow Drive, Unit 9, Mississauga, Ontario L5S 1V3 (905) 672-9440