

VT7



Designed as entry level version of the VT8 model, this lighting tower maintains the same high performances and robustness. New version with Mitsubishi engine.

- Vertical mast
- 8m max height
- Galvanized telescopic sections
- 5 adjustable stabilizers
- Certified wind stability up to 110Km/h
- Manual lifting system
- Rising system with manual winch
- 4 x 1000W metal halide floodlights
- On/Off switches one for each lamp
- Low speed towing trailer, single axle
- 8 KVA 230V power generator (50/60 Hz)
- Coiled cable to supply the lamps
- Pockets and central hook for lifting the complete structure with crane or forklift
- 340° mast rotation
- 75 l fuel metal tank
- Lockable doors
- Running time of more than 40 hours
- Hour counter
- Emergency stop button
- Fuel level indicator

TECHNICAL DATA

Dimensions and weight

Min Dim. (cm) 256x130x246

Max Dim. (cm) 265x246x800

Weight (kg) 719

Illuminated area

4000 m²

Engines available

Mitsubishi L3E, diesel, water cooled, 3 cylinders, 1500/1800 rpm

Quantity per container

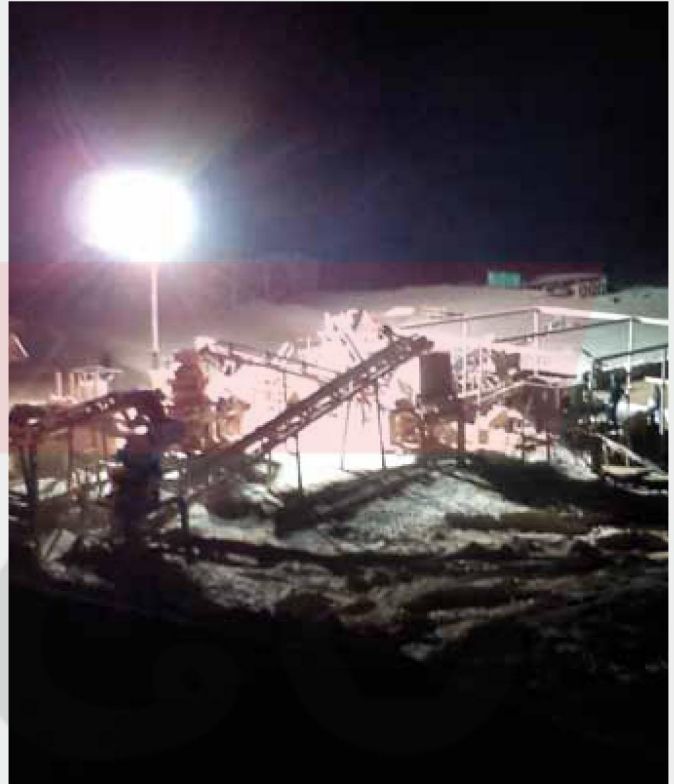
20 feet: 7 units

40 feet: 14 units



VT7 4x1000W MH

VT7 LIGHT TOWER - RUSSIA



ILLUMINATED AREA: 4.000 m²

